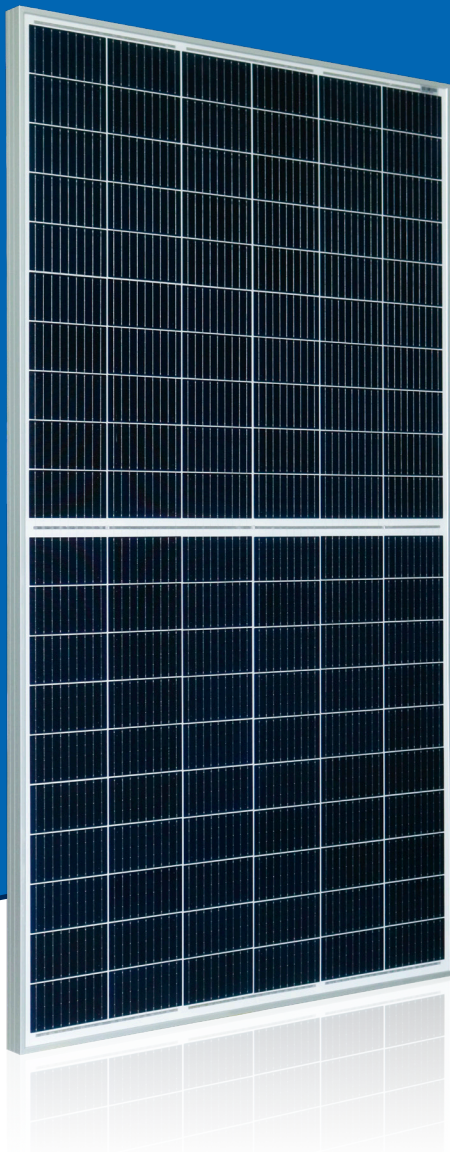


AstroTwins™

Enjoy the Energy of the Universe

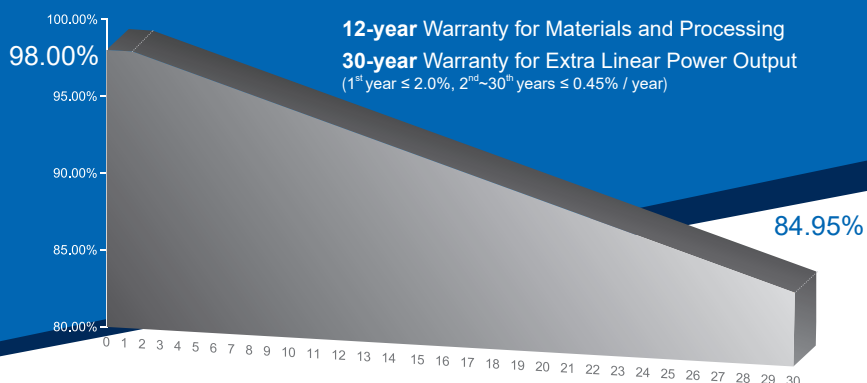


335W~350W

P-type Monocrystalline PV Module

CHSM60M(DG)/F-BH Series (158.75)

CHSM60M(DG)/F-BH is bifacial module with white glazed glass



KEY FEATURES



OUTPUT POSITIVE TOLERANCE

Guaranteed 0~+5W positive tolerance ensures power output reliability.



EXCELLENT WEATHER RESISTANCE

Reduces the cell micro-crack and extended product warranty.



BIFACIAL POWER

The backside makes use of the reflected and scattered light from the surroundings, the modules can yield up to 5%~30% power more, depending on the albedo.



REDUCE INTERNAL MISMATCH LOSS

Reduces mismatch loss and improves output.



APPLICABLE FOR MULTI DIFFERENT ENVIRONMENTS

The wide range of applications, such as BIPV, vertical installation, snow area, high humidity area and strong sandstorm area, etc.



SNAIL TRAIL RESISTANCE

Reduces the probability of snail trails with zero water vapor transmittance.

COMPREHENSIVE CERTIFICATES



First solar company which passed the TUV Nord IEC/TS 62941 certification audit.

For Global Market



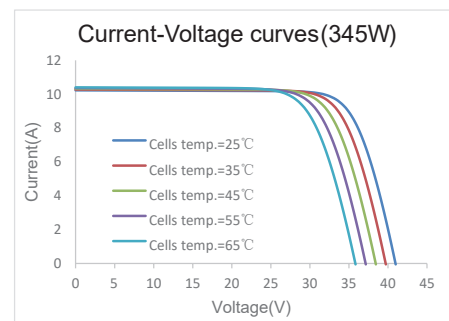
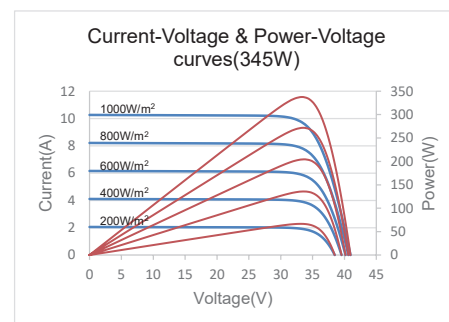
ASTRONERGY
A CHNT COMPANY

ELECTRICAL SPECIFICATIONS

Power rating (front)	335 Wp		340 Wp		345 Wp		350 Wp	
Testing Condition	Front	Back	Front	Back	Front	Back	Front	Back
STC rated output (P_{mpp}/Wp)*	335	236	340	239	345	243	350	247
Rated voltage (V_{mpp}/V) at STC	34.44	34.62	34.67	34.85	34.90	35.08	35.13	35.31
Rated current (I_{mpp}/A) at STC	9.73	6.82	9.81	6.87	9.89	6.93	9.97	6.98
Open circuit voltage (V_{oc}/V) at STC	40.80	39.60	40.99	39.78	41.18	39.96	41.37	40.15
Short circuit current (I_{sc}/A) at STC	10.14	7.11	10.21	7.16	10.28	7.21	10.35	7.26
Module efficiency	19.4%	13.6%	19.6%	13.8%	19.9%	14.0%	20.2%	14.3%
Temperature coefficient (P_{mpp})	- 0.34%/°C							
Temperature coefficient (I_{sc})	+0.04%/°C							
Temperature coefficient (V_{oc})	- 0.27%/°C							
Nominal module operating temperature (NMOT)	44±2°C							
Maximum system voltage (IEC/UL)	1500V _{DC}							
Number of diodes	3							
Junction box IP rating	IP 68							
Maximum series fuse rating	20 A							

STC: Irradiance 1000W/m², Cell Temperature 25°C, AM=1.5

CURVE



ELECTRICAL SPECIFICATIONS (Integrated power)

P_{mpp} gain	P_{mpp}	V_{mpp}	I_{mpp}	V_{oc}	I_{sc}
5%	362 Wp	34.90 V	10.38 A	41.18 V	10.79 A
10%	380 Wp	34.90 V	10.87 A	41.18 V	11.31 A
15%	397 Wp	34.80 V	11.40 A	41.28 V	11.82 A
20%	414 Wp	34.80 V	11.90 A	41.28 V	12.34 A
25%	431 Wp	34.80 V	12.39 A	41.28 V	12.85 A

Electrical characteristics with different rear power gain (reference to 345W)

MECHANICAL SPECIFICATIONS

Outer dimensions (L x W x H)	1714 x 1010 x 30 mm
Frame technology	Aluminum, silver anodized
Glass thickness	2.0 mm
Cable length (IEC/UL)	Portrait: 350 mm Landscape: 1100 mm
Cable diameter (IEC/UL)	4 mm ² / 12 AWG
① Maximum mechanical test load	5400 Pa (front) / 2400 Pa (back)
Connector type (IEC/UL)	MC4 compatible

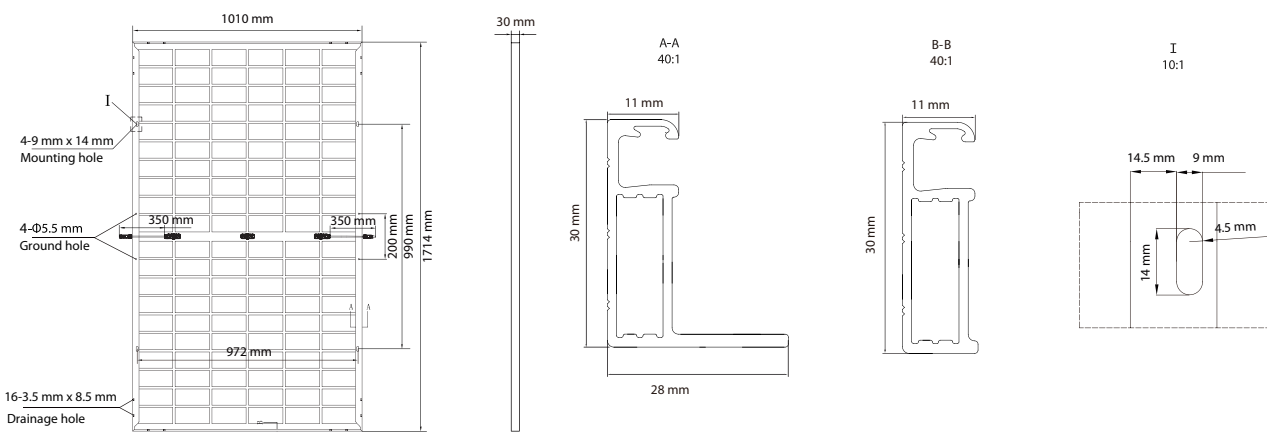
① Refer to Astronergy crystalline installation manual or contact technical department.
Maximum Mechanical Test Load=1.5×Maximum Mechanical Design Load.

PACKING SPECIFICATIONS

① Weight (module only)	22.1 kg
② Packing unit	36 pcs / box
Weight of packing unit (for 40'HQ container)	838 kg
Number of modules per 40'HQ container	936 pcs

① Tolerance +/- 1.0kg
② Subject to sales contract

MODULE DIMENSION DETAILS



© Chint Solar (Zhejiang) Co., Ltd. Reserves the right of final interpretation. please contact our company to use the latest version for contract.