

浙江正泰电器股份有限公司
ZHEJIANG CHINT ELECTRICS CO.,LTD.

CB-125CXZ 塑料外壳式断路器产品规格书

Specification of CB-125CXZ Moulded-Case Circuit-Breaker



产品名称/ Product name	塑料外壳式断路器/ Moulded Case Circuit Breaker
产品型号/ Product model	CB-125CXZ
日期/ Date	2023.08.10
版本/ Version	V1.0

拟制/ Prepared by	校对/ Proofread by	会签/ Countersigned by	审定/ Reviewed by
艾青 20230810	朱俊 20230810	李罗斌 20230817 冯洋 20230811	司莺歌 20230817

版本修订记录/ Revision record

版本/ Version	需求项目/ Specification Requirement	变更前规格要 求/Original Specifications	变更后规格要求 /New Specifications	变更原因/ Change Reason	变更人/ Requested by	变更日期/ Change Date
V1.0		/	/	首次发布/ First Release	艾青/Qing Ai	2023.08.10

CB-125CXZ 塑料外壳式断路器产品规格书

Specification of CB-125CXZ Moulded-Case Circuit-Breaker

1 产品名称/ Name

塑料外壳式断路器/ Moulded-case circuit-breaker

2 规格型号/ Model

C B - 125 CX Z 1P □

1 2 3 4 5 6 7

序号/ Serial number	标识/ Logo	含义/ Meaning
1	C	CHINT 正泰 专用于通信市场/ Special for communications market
2	B	断路器/Circuit breaker
3	125	壳架等级/Shell frame grade
4	CX	插入式/Plug-in
5	Z	直流/Direct current
6	1P	极数/Poles:1P
7	80A,100A,125A	断路器额定电流/Rated current: 80A,100A,125A

3 执行标准/ Standards: GB/T 14048.2,IEC 60947-2

4 证书类型/ Certificate Type: CCC,CE,TUV

5 技术参数/ Technical Parameters

5.1 电气特性/ Electrical characteristics

- a) 额定工作电压/ Rated operational voltage U_e :DC80V
- b) 额定电流/ Rated current I_n :80A,100A,125A
- c) 额定运行短路分断电流/ Rated service short-circuit breaking capacity I_{cs} :10kA
- d) 额定极限短路分断能力/ Rated ultimate short-circuit breaking capacity I_{cu} :10kA
- e) 额定瞬时短路电流整定值/ Rated instantaneous short-circuit current setting: $I_i = 11I_n$
- f) 工频耐压/ Power-frequency withstand voltage:2500V

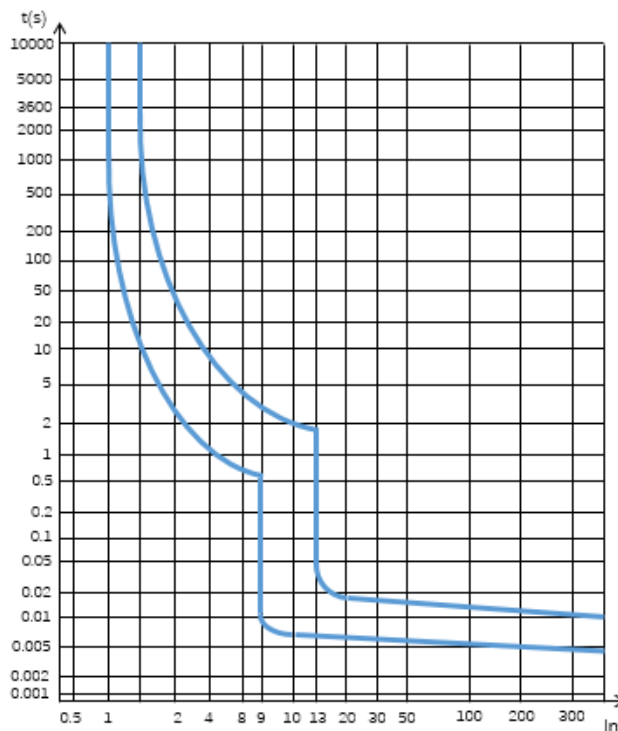
g) 额定冲击耐受电压/ Rated impulse withstand voltage $U_{imp}:4kV$

5.2 机械电气寿命/ Mechanical and electrical endurance

a) 机械寿命/ Mechanical endurance:10000 次/times

a) 电气寿命/ Electrical endurance:4000 次/times

5.3 脱扣曲线/ Tripping curve



5.4 不同环境温度下使用电流修正系数/ Current correction factor used at different ambient temperature

额定电流 I_n / Rated current (A)	不同温度环境下使用电流修正值/Current correction value under different ambient temperature											
	-40℃	-30℃	-20℃	-10℃	0℃	10℃	20℃	30℃	40℃	50℃	60℃	70℃
80	1.36	1.32	1.28	1.24	1.2	1.16	1.12	1.06	1	0.95	0.95	0.90
100	1.36	1.32	1.28	1.24	1.2	1.16	1.12	1.06	1	0.95	0.95	0.90
125	1.36	1.32	1.28	1.24	1.2	1.16	1.12	1.06	1	0.95	0.95	0.90

6 工作环境/ Working environment

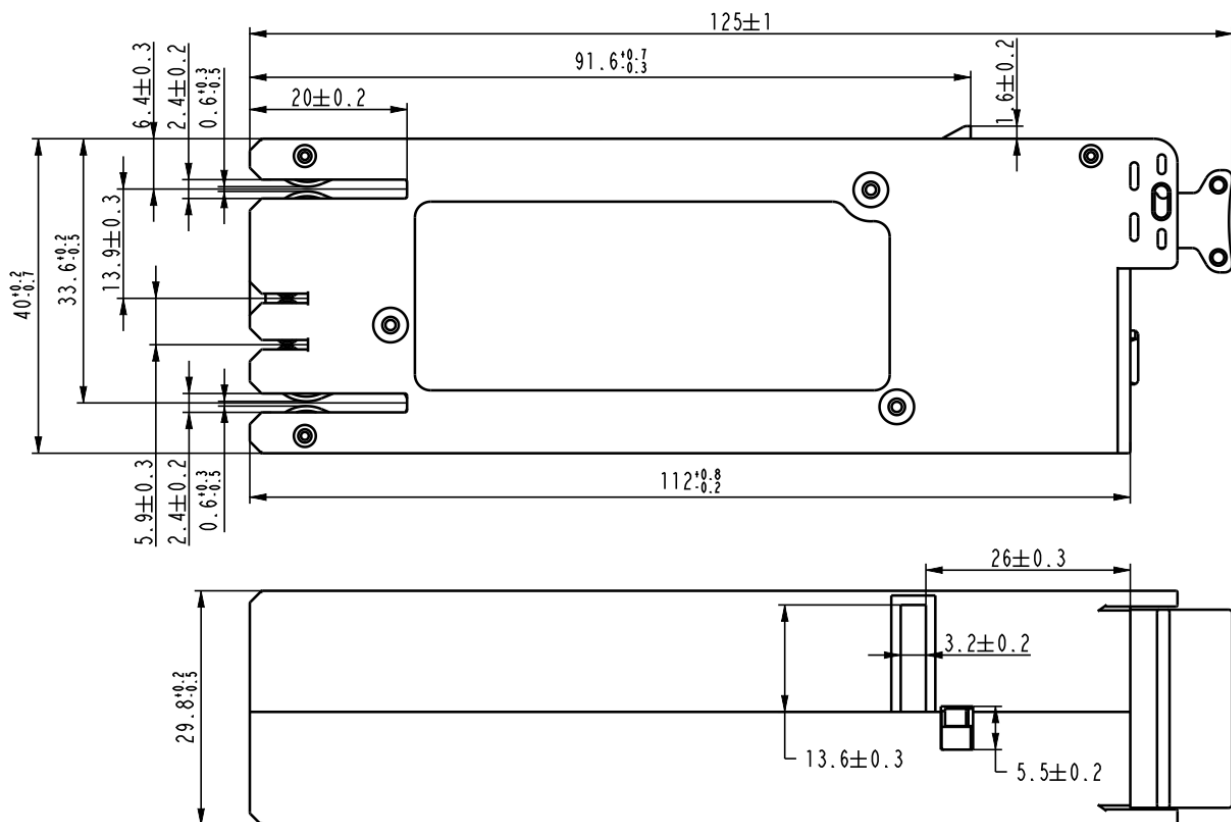
a) 海拔/Altitude: $\leq 2000m$

b) 环境温度/Ambient temperature: $-40^{\circ}C \sim +70^{\circ}C$

c) 空气相对湿度/Relative air humidity: $\leq 95\%$

- d) 污染等级/ Pollution level:3 级/ Level 3
- e) 无显著振动和冲击的地方/ Place without significant vibration and impact

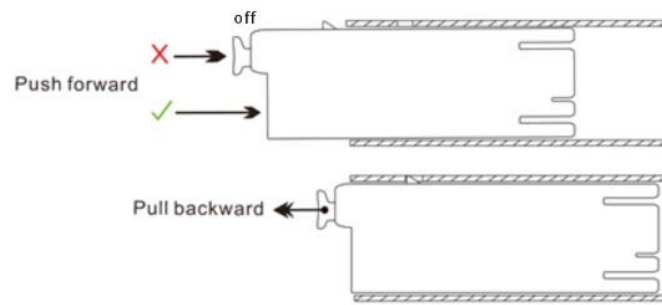
7 外形尺寸/ Overall dimensions



8 产品简介/ Product introduction

8.1 基本情况/ Basic information

- a) 具有过载及短路保护装置—保护功能齐全/ Equipped with overload and shortcircuit protection devices – complete protection functions
- b) 插入式安装方式—安装简捷方便/Plug-in mounting – Convenient and easy installation.
- c) 符合 RoHS 要求/ Comply with RoHS requirements
- d) 运输保管/ Transportation and storage
 - 1) 在运输、保管过程中，均不得受雨水侵袭/ The product shall be kept away from rain during transportation and storage
 - 2) 产品应贮存在无雨雪侵入、空气流通、空气温度不高于+85℃与不低于-40℃、周围空气中无酸性、碱性或其它腐蚀性气体的环境中储存/ The Product should be stored in an environment protected from rain and snow, in ventilation, air temperature of no more than +85℃and no less than -40℃,and without acid, alkaline or other corrosive gases in the surrounding air
- e) 安装、拆卸说明/Installation and disassembly instructions



8.2 接线能力/ Wiring capacity: (10~35)mm²铜导线/ Copper conductor, 扭矩/ Torque 2.0Nm.

尾部功率接口适配 2mm 连接排, 信号接口适配 1mm 连接排/The tail power interface is adapted to 2mm thick busbar, and the signal interface is adapted to 1mm thick busbar.

注/Remark: 产品内外包装物按实际接收的为准/ The inner and outer packaging of the product shall be subject to the actual received.