

Better AMI Performance

CHS160

Single Phase Smart Meter

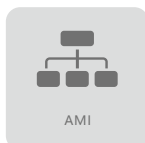
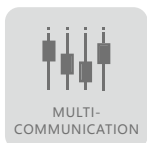
ELITE series

CHNT

CHINT METER



- ⊙ Ultra Anti-Tamper
- ⊙ Large LCD Display
- ⊙ Advanced AMI Application



CHNT

CHINT METER

CHS160

Single Phase Smart Meter

SPECIFICATIONS

Measurement

- Compliance with IEC standard
- Element: 1P2W, 1P3W
- Accuracy: Class 1.0 for active, Class 2.0 for reactive

Voltage

- Nominal voltage (U_n): 110V, 120V, 220V, 230V, 240V
- Operating range: $0.7U_n \sim 1.2U_n$
- Power consumption: $\leq 1.5W$, $0.5VA$

Current

- $5(60)A/5(80)A/5(100)A$

Frequency

- 50Hz or 60Hz

Real-time Clock

- Accuracy within 0.5 seconds per day at 23°C

LCD Display

- 7 characters of 7 segment display
- Digital size: $5.8mm \times 13mm$
- LCD display with power failure
- With backlight

Battery (Optional)

- Built-in battery
- Voltage: 3.6V
- Backup time: 15 years with power

Measured Values

- Import/Export/Absolute/Algebraic kWh
- Import/Export/ kvarh
- Instantaneous kW, kvar, kVA, Irms, Vrms, Frequency, Power factor

Maximum Demand

- Maximum demand: kW, kvar
- Support interval and sliding demand type
- Intervals programmable from 5 to 60 minutes

Time of Use

- Up to 2 rates (default)
- Up to 12 seasons each year
- Up to 12 week table
- Up to 8 day table and 10 time interval in a day

Relay (Optional)

- One relay / 100A

Event Logs

- Tamper detection
- Configurable event alarming system
- Meter error state indication on LCD

Load Profile (Optional)

- Up to 2 channels
- Over 11520 records per channel

Communications

- Optical port
- Built-in LoRa/RF/Bluetooth module (optional)

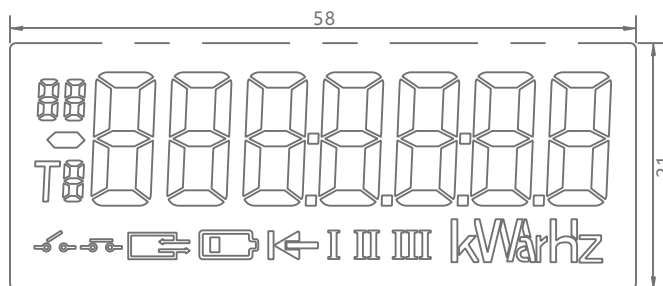
Environmental

- Operating range limit: $-40^{\circ}C$ to $+75^{\circ}C$
- Storage range limit: $-40^{\circ}C$ to $+85^{\circ}C$
- Relative humidity: $\leq 95\% RH$
- Ingress protection: IP54

Dimensions and weight

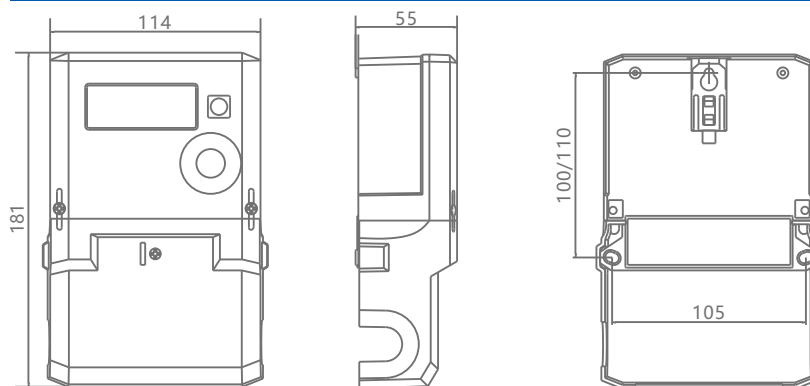
- Dimensions: $181mm \times 114mm \times 55mm$
- Weight: 1.0 kg (Approx.)

LCD INDICATION



Units:mm

METER DIMENSIONS



Units:mm

Zhejiang Chint Instrument & Meter Co., Ltd

Add: No.560, Yueming Road, Binjiang District, Hangzhou, Zhejiang, China P.C: 310052 Tel: +86-571-56977777

Fax: +86-577-62919588 E-mail: chintmeter@chint.com

Website: <http://en.chintim.com/>

*All rights reserved. Specification and technical data are subject to change without notice. Please contact us to confirm relevant information on ordering.

