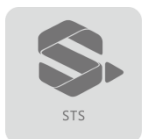


# Customer Interface Unit

## CHU660



- ◎ M-Bus Communication
- ◎ Keypad with backlight
- ◎ Higher cost effective



# CHU660

Customer Interface Unit

## SPECIFICATIONS

### LCD Display

- ⊙ 8 characters of 7 segment display
- ⊙ Digital size: 7.76mm × 3.38mm
- ⊙ With backlight

### Display Values

- ⊙ Cumulative and credit energy
- ⊙ Instantaneous kW, kVA, Irms, Vrms

### Display Status

- ⊙ Communication status
- ⊙ Relay status
- ⊙ Alarm status

### Keypad

- ⊙ 4×3 keypad
- ⊙ Keypad top-up
- ⊙ Inquiry information
- ⊙ Management: Set max power, event reset
- ⊙ Test: Relay test, LCD test
- ⊙ With backlight(optional)

### Communications

- ⊙ M-Bus
- ⊙ Communication with MCU

### LED

- ⊙ Pulse indication
- ⊙ Alarm indication
- ⊙ Balance indication

### Alarm function

- ⊙ Balance alarm (LED and buzzer)
- ⊙ Tamper alarm

### Security

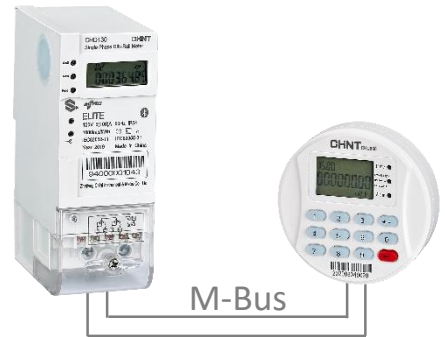
- ⊙ Compatibility STS
- ⊙ 20 digits token transfer into meter through keypad

### Environmental

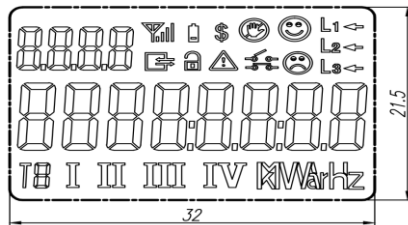
- ⊙ Operating range limit: -40°C to +75°C
- ⊙ Storage range limit: -40°C to +85°C
- ⊙ Relative humidity: ≤ 95%RH
- ⊙ Ingress protection: IP51

### Dimensions and weight

- ⊙ Diameter: 87.5mm
- ⊙ Height: 18.5mm
- ⊙ Weight: **0.2kg (Approx.)**

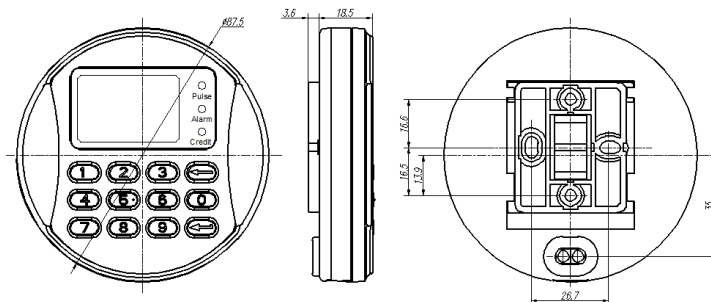


## LCD INDICATION



Units: mm

## CIU DIMENSIONS



Units: mm

Zhejiang Chint Instrument & Meter Co., Ltd

Add: No.560, Yueming Road, Binjiang District, Hangzhou, Zhejiang, China P.C: 310052 Tel: +86-571-56977777

Fax: +86-577-62919588 E-mail: chintmeter@chint.com

Website: <http://en.chintim.com/>

\*All rights reserved. Specification and technical data are subject to change without notice. Please contact us to confirm relevant information on ordering.

