

Europe

Italy

CHINT Italia Investment Srl

Add: Via Bruno Maderna 7 30174 Venezia
 Tel: +39 041.446614
 Fax: +39 041.5845900
 E-mail: info@chint.it

Spain

CHINT Electrics S.L.

Add: Calle José Echegaray, Num 8.Parque Empresarial Las RozasEdificio 3,
 Planta Baja, Oficina 7-8.C.P: 28232 Las Rozas (Madrid)
 Tel: +34 91 645 03 53
 E-mail: info@chint.eu

Czech Republic

NOARK Electric Europe s.r.o.

Add: Sezemická 2757/2, 193 00 Prague 9
 Tel: +420 226 203 120
 Email: europe@noark-electric.com

Turkey

CHINT Turca Elektrik Sanayi VE Ticaret Anonim Sirketi

Add: Zumrutevler Mahallesi Ural Sokak No. 22/18 NAS PLAZA B Block KAT 1,
 Malepe, Istanbul
 Tel: +90216 621 00 55
 Fax: +90216 621 00 50
 E-mail: fatura@chint.com.tr

West Asia & Africa

Egypt

CHINT Electrics (Egypt) Co., Ltd

Add: Building B16 - Smart village, Abu Rawash - Giza, Egypt
 Tel: +20 1097173769
 P.O BOX : 00202
 Email: chinteg@chintglobal.com

Kenya

ZHENGTAI ELECTRICS(KENYA) CO., LIMITED

Add: OFFICE 1A, 8TH FLOOR, KISM TOWERS, LR No. 209/945/1- NGONG
 ROAD - NAIROBI, KENYA
 Tel: +254 072256485
 Email: chintkenya@chintglobal.com

U.A.E

CHINT MIDDLE EAST AND AFRICA DMCC

Add: Unit No: 2101, 21085,2109 , Jumeirah business center 1, Cluster G,
 Jumeirah Lakes Towers, Dubai, UAE
 Tel: +97145571532
 P.O BOX: 337555
 E-mail: global-sales@chint.com

Nigeria

CHINT POWER & ENERGY SERVICES CO., LIMITED

Add: 3RD FLOOR TOWER 2, CHURGATE BUILDING , VICTORIA ISLAND, LAGOS
 Tel: +234 8110728119
 E-mail: czjie@chintglobal.com

North America

United States

NOARK Electric (USA) Inc

Add: 2188 Pomona Blvd., Pomona, CA 91768
 Tel: 626-330-7007
 Fax: 626-330-8035
 E-mail: nasales@noark-electric.com

Mexico

CHINT SOLAR MEXICO S DE RL DE CV

Add: Miguel Cervantes Saavedra 169 Piso 11 Col. Granada Del. Miguel Hidalgo
 C.P. 11520 CDMX, México
 Tel: +52 1-55-8881-6127
 E-mail: info@chint-mexico.com

**CHINT GLOBAL PTE. LTD.**

Building A3, 3655 SiXian Road,
 Songjiang District, Shanghai, China

Tel: +86-21-5677 7777 Web: www.chintglobal.comE-mail: global-sales@chintglobal.com**A CHINT COMPANY**

Printed by CHINT GROUP. No part of this brochure may be used or reproduced in any manner whatsoever without written permission. CHINT is the only publisher that can modify or change the content. Parts of the pictures used in the brochure are from the Internet. Please contact us in any case of copyright.



© CHINT GROUP ALL RIGHTS Reserved Recycle Paper Printed
 2022.07

The CHINT logo is displayed in white text on a dark blue background. The 'i' in 'CHINT' has a small red dot above it.

CHINT

Empower the World



Sub Main Distribution Boards

In EnergiX series by CHINT

ABOUT CHINT



CHINT A leading global provider of smart energy solutions

CHINT was established 38 years ago in 1984 and built from the capital of approximately 8,000 US dollars. With our rapid development these years, CHINT has become the world's leading intelligent energy solutions provider for the whole industrial chain with the most complete product ranges. In 2021, our annual sales revenue exceeded 16.1 billion dollars and total assets of more than 16.2 billion.

Over two decades of global expansion, our business network covers more than 140 countries and regions worldwide in business industries of low-voltage electric, power transmission and distribution, smart technology, energy instruments and meters, green energy, solar and more. CHINT has more than 40,000 employees worldwide, creating more than 200,000 jobs in the industrial chains.

As the market localization progresses steadily, CHINT Global further establishes its supply chain through business integration and industrial upgrade. Optimizing the service system and project financing, providing innovatively integrated technical services for the global energy market, and a flexible working business model, energy, intelligent manufacturing and digital technology, CHINT has adopted "One Cloud & Two Nets" as the business strategy, takes "CHINT Cloud" as the carrier of intelligent technology and data application, and takes the lead in building the energy Internet of things (EIoT) and industrial Internet of things platforms (IIoT).

Focusing on the energy system of supply, storage, transmission, distribution and consumption, CHINT has core businesses of clean energy, energy distribution, big data and energy value-added services. Furthermore, CHINT's pillar businesses include photovoltaic equipment, energy storage, power transmission & distribution, low-voltage apparatuses, intelligent terminals, software development and control automation. By developing into a platform-based enterprise, CHINT provides a package of energy solutions for public institutions, industrial & commercial users and end-users, by building a regional smart energy operation ecosphere.

Main Businesses



Clean Energy



Low-voltage
Apparatus



Power Transmission and
Distribution



Instrumentation
and Apparatus



Smart Home



Intelligent
Building



Intelligent
Manufacturing



Industry
Automation



Smart Heating



Smart Water

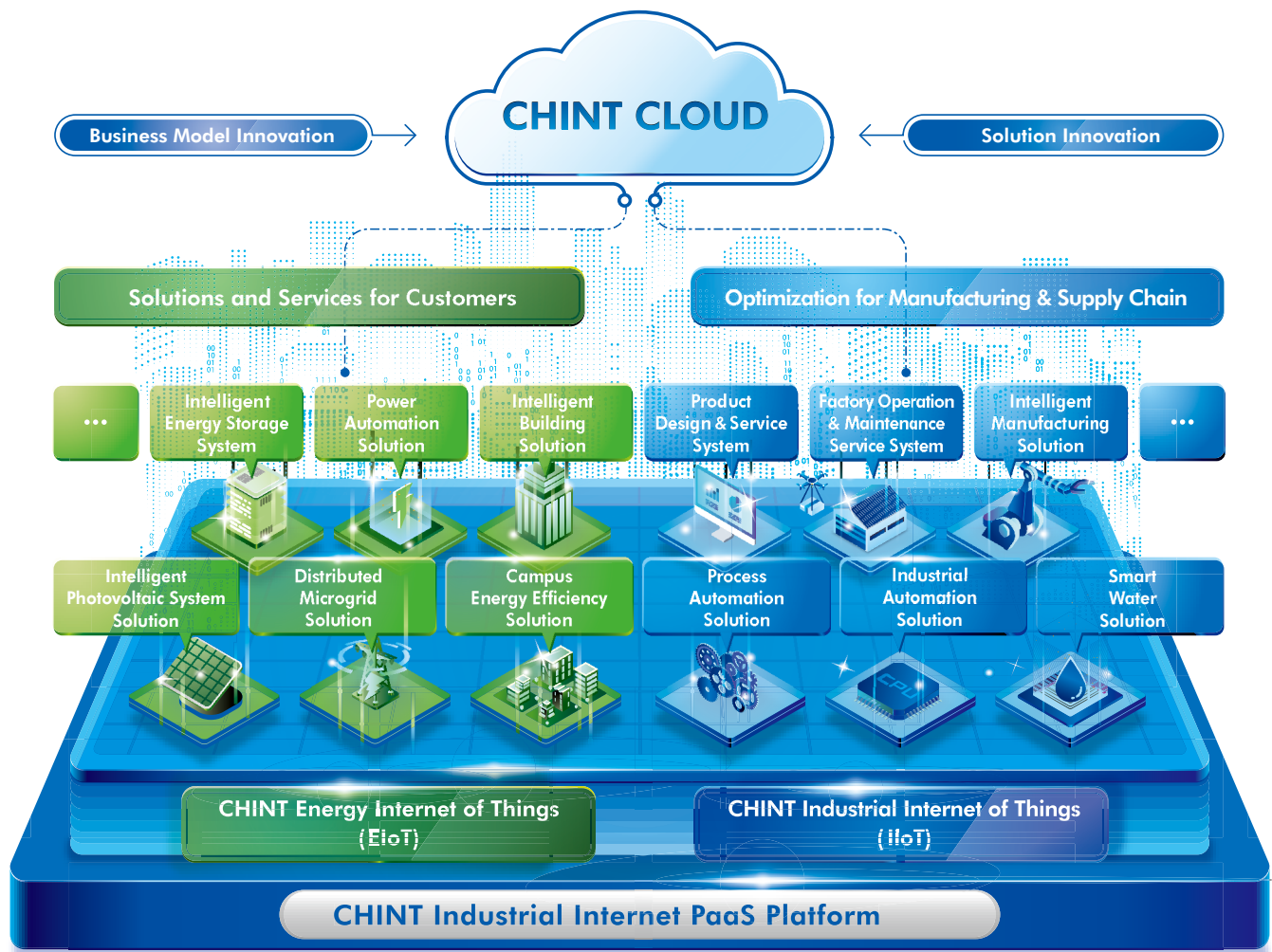


Home Electrical
Apparatus



Energy Efficiency
Management

ONE CLOUD & TWO NETS STRATEGY



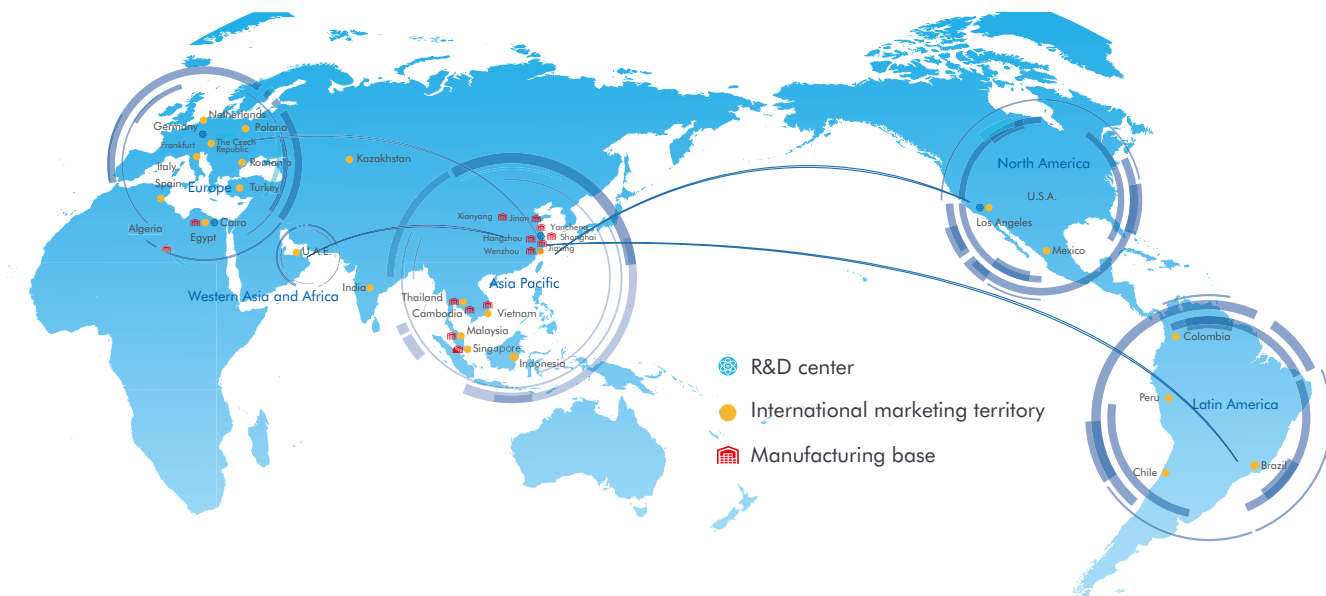
Energy system optimization is an inevitable trend against the background of resource shortage, environmental pollution and climate change – three challenges faced by global energy development. To keep in line with the trend, CHINT actively implements the business strategy of One Cloud & Two Nets, continuously promotes the deep integration of big data, IoT, AI and manufacturing industry in stages to become a platform-based enterprise, and leads the new direction of industry development.

As a medium of smart technology and data applications, CHINT Cloud connects corporate in-house manufacturing with operation and management data, realizing digital applications and services both internally and externally.

As a user-centric multi-energy complementary smart energy system, CHINT EIoT provides a package of energy solutions for governments, industrial & commercial users and end users. Its business includes Smart Energy Efficiency, Smart Power, Smart Home and Smart Clean Energy, etc.

As a smart manufacturing system based on corporate digital transformation, CHINT IIoT constitutes a flexible, high-efficiency and intelligent industrial system. Its business includes Intelligent Manufacturing, Intelligent Industry, Smart Water, Smart Heating, etc.

GLOBAL FOOTPRINT



4 National R&D Centers: North America, Europe, Asia Pacific, North Africa

6 International Marketing Territories: Asia Pacific, Western Asia and Africa, Europe, Latin America, North America, China

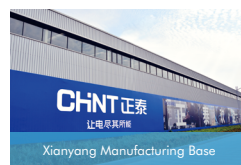
14 Manufacturing Bases: China (Wenzhou, Hangzhou, Shanghai, Jiaxing, Xianyang, Jinan, Yancheng), Thailand, Singapore, Vietnam, Malaysia, Egypt, Algeria and Cambodia

20+ International Logistics Centers

2300+ Sales Companies

GLOBAL CAPACITY LAYOUT

The industrial manufacturing bases are mainly located in Wenzhou, Hangzhou, Shanghai, Jiaxing, Xianyang and Yancheng. Additionally, CHINT has set up factories in Thailand, Singapore, Vietnam, Malaysia, Egypt, Cambodia etc.



R&D, QUALITY, SALES, LOGISTICS

Main Advantages

Global R&D System

CHINT has established national R&D centers in North America, Europe, Asia Pacific, North Africa and other areas. We have explored the mode of Industry-University Research Institute Collaboration and Integration together with the universities and research institutions worldwide so as to integrate the global innovation resources and promote corporate R&D innovation and talent cultivation.



24 research institutes



The average annual R&D investment accounts for 4-12% of the revenue



Over 6000 patents in total

Global Certification

The products have passed the standards and specifications in various regions around the world and obtained numerous international certifications



Honors

- No. 1 in China's Top 100 Private Enterprises with Social Responsibility in 2021
- No. 92 in 2021 China's Top 500 Private Enterprises
- No. 244 in 2021 Top 500 Chinese Enterprises
- The intelligent manufacturing factory of low-voltage electrical appliances was selected as the national 2021 Intelligent Manufacturing Demonstration Factory



Integrated Vertical R&D

By gathering the global industry elites to Provide safe and stable energy-saving green and advanced electric products.

5%

At least 5% of revenue is invested in research and development

Great Quality System

Ensuring flaw-free and trouble-free products, the multi-dimensional and multilevel control is conducted through procurement, inspection, quality control and certification.

One-stop Services

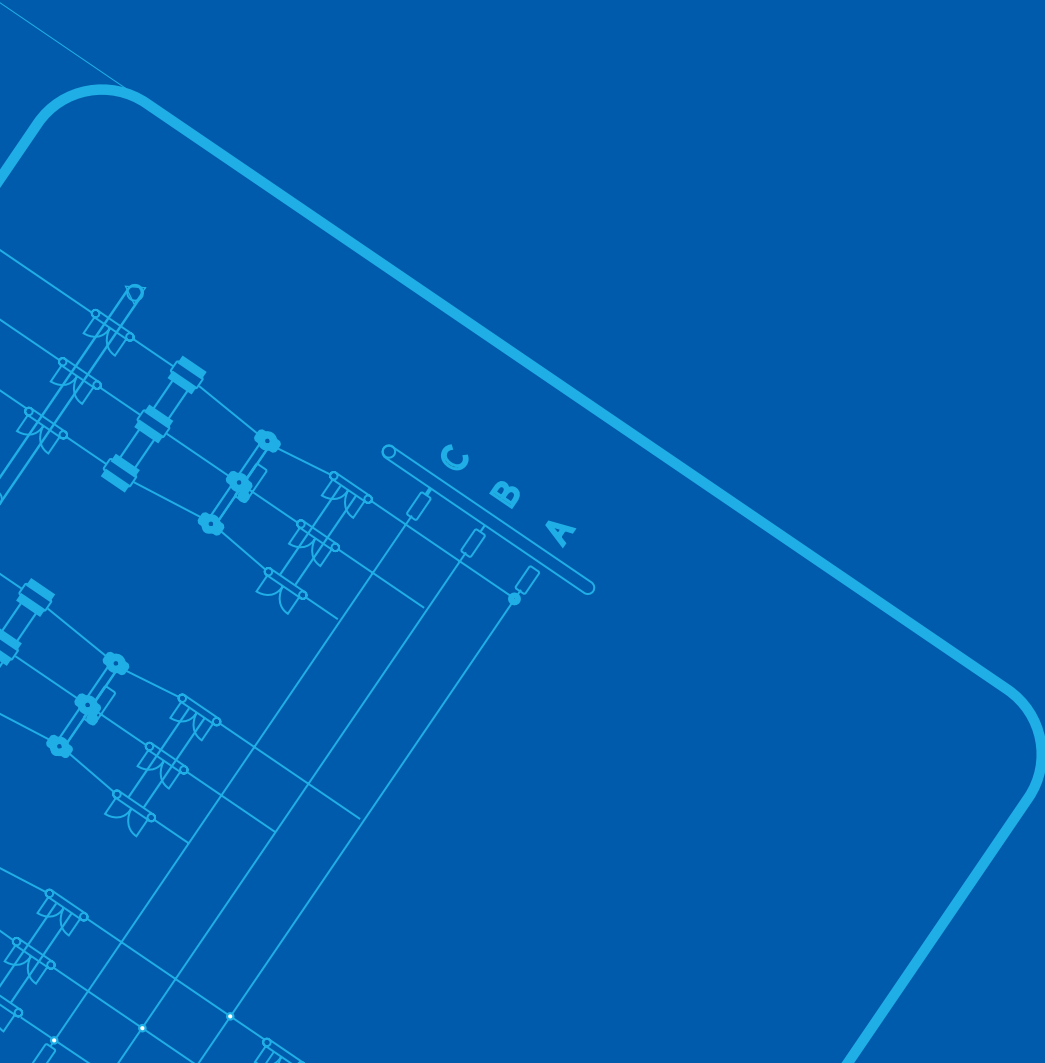
CHINT's concept is that it is not difficult to fulfill a high-quality logistics distribution at one time, while it is difficult to stay as accurate and prompt as the first-time. High-efficiency and high-precision accuracy are our requirement.

48-Hour Response

Providing end-to-end one-stop services for customers with complains, business consulting and technical support by solving problems immediately and including any possible problems in advance.



EnergiX-S



EnergiX-S

1.0 General

2.0 Features

3.0 Technical Parameters

4.0 Typical application

5.0 Type designation

6.0 Transport and installation

General

For over 40 years, CHINT has cultivated a rich tradition of safety and innovation, developing electrical products that set the industry standard in technology and met the demands of commercial buildings, educational establishments, hospitals, government buildings, small independent factory and other applications that required safe, reliable and high performance protection of their electrical power sub main distribution systems. This expertise has now come full circle with the introduction of a solution for the such application electrical management hub: CHINT (Sub main distribution board) EnergiX-S.



2.0

Features

2.2 Reliable operation at ambient temperature of 50 °C



Suitable for severe environmental hot condition



Certified under 50 °C ambient temperature

2.3 Up to IP54 protection degree



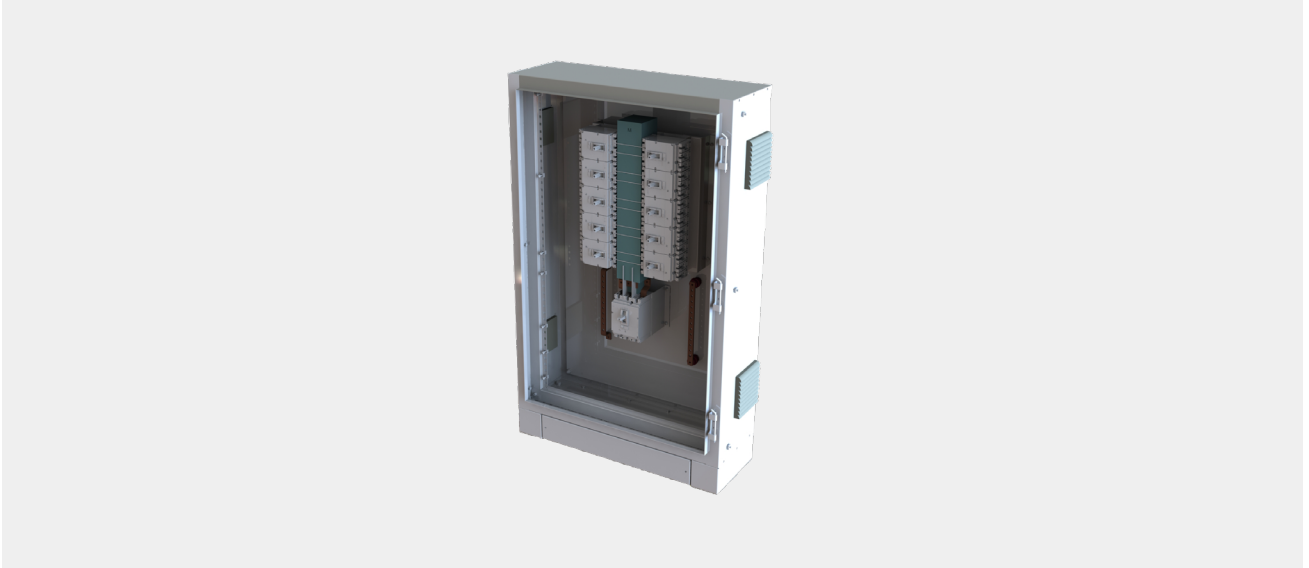
Suitable for dusty, wet areas¹, high level of protection against particles, and a fair amount of protection against water

¹: Suitable for indoor/outdoor (equipped with canopy) application.

Features

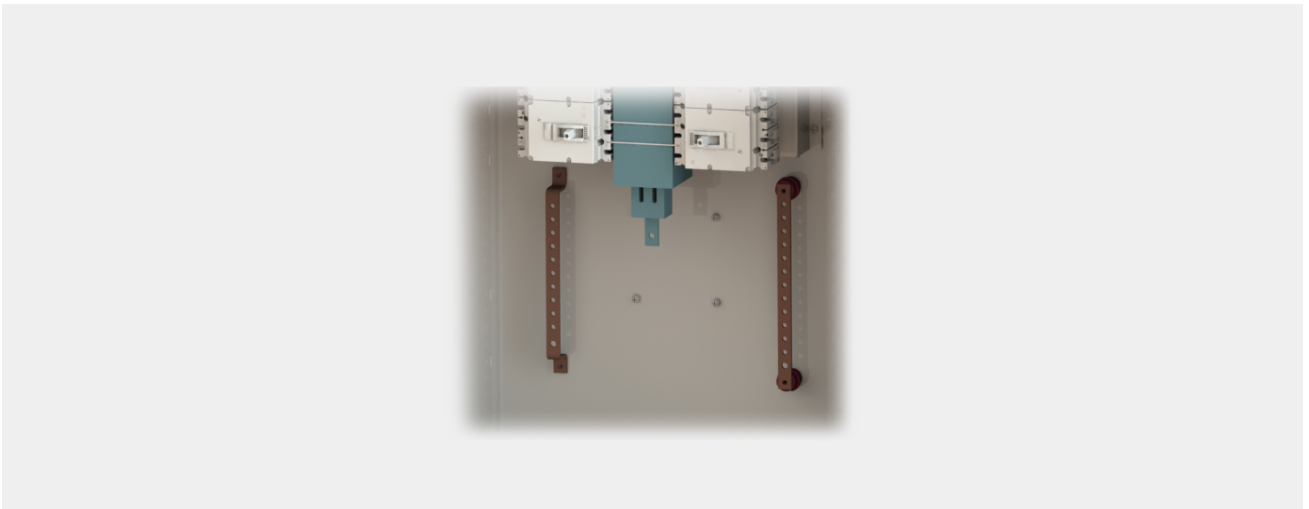
2.4 Pan assembly design

Compared to the traditional power distribution board complex wiring, EnergiX-S pan assembly design offers a new sense, making outgoing cable located on the both sides of the board. It's more convenient for connection, allows MCCBs to be mounted or removed quickly, avoiding large-scale power outages and saving installation time and space.



2.5 Independent design

Benefit from the independent PE bar and independent neutral bar design, EnergiX-S can meet TN-S grounding system.



Features

2.6 Multiple ranges

EnergiX-S offers three current levels: 250A, 400A, 800A. And there are three outgoing ways choices available: 10 ways, 12 ways, 14 ways. Outgoing MCCBs current are 125A and 250A, they can form different combinations. Details are in the table below.

In addition, EnergiX-S has two installation modes: wall mounting and free-standing.

The multiple choices make EnergiX-S possible to meet the different needs of different customers.

Incoming	No. ways	Branches 125A MCCB No.	Branches 250A MCCB No.
250A	10	10	0
	12	12	0
	14	14	0
400A	10	10	0
	10	8	2
	10	6	4
	12	12	0
	12	10	2
	12	8	4
	14	14	0
	14	12	2
	14	10	4
800A	10	10	0
	10	8	2
	10	6	4
	12	12	0
	12	10	2
	12	8	4
	14	14	0
	14	12	2
	14	10	4

3.0

Technical parameters

Standard	IEC 61439-1&2
Rated current(A)	Up to 800
Rated insulation voltage (V AC)	1000 (main busbar, incoming unit) 690 (outgoing units)
Rated operation voltage (V AC)	400/415
Rated impulse withstand voltage(kV)	8
Rated short time withstand current I _{cw}	25kA/1s (SMDB-250) 36kA/1s (SMDB-400) 40kA/1s (SMDB-800)
Frequency (Hz)	50/60
IP	Up to IP54
IK	10
Ambient temperature(C)	50
Surface treatment of enclosure	Polyester Powder Coating
Color	RAL7035 / Customizable
Cable entry	Top/Bottom (with removable gland plates)
Cable access	Front

1. Incoming & Outgoing with fixed / Plug in / DOT device
2. Incoming with Isolator / MCCB / Non-Auto MCCB type
3. Metering Instruments as per customer requirements
4. Incomer & Outgoing devices with BMS facility if required

4.0

Typical application

As the sub main distribution board, EnergiX-S plays a significant role in power distribution and control. EnergiX-S can be used as a regional distribution board in many scenarios, such as a incoming power center of a small independent factory, one floor distribution board, etc.

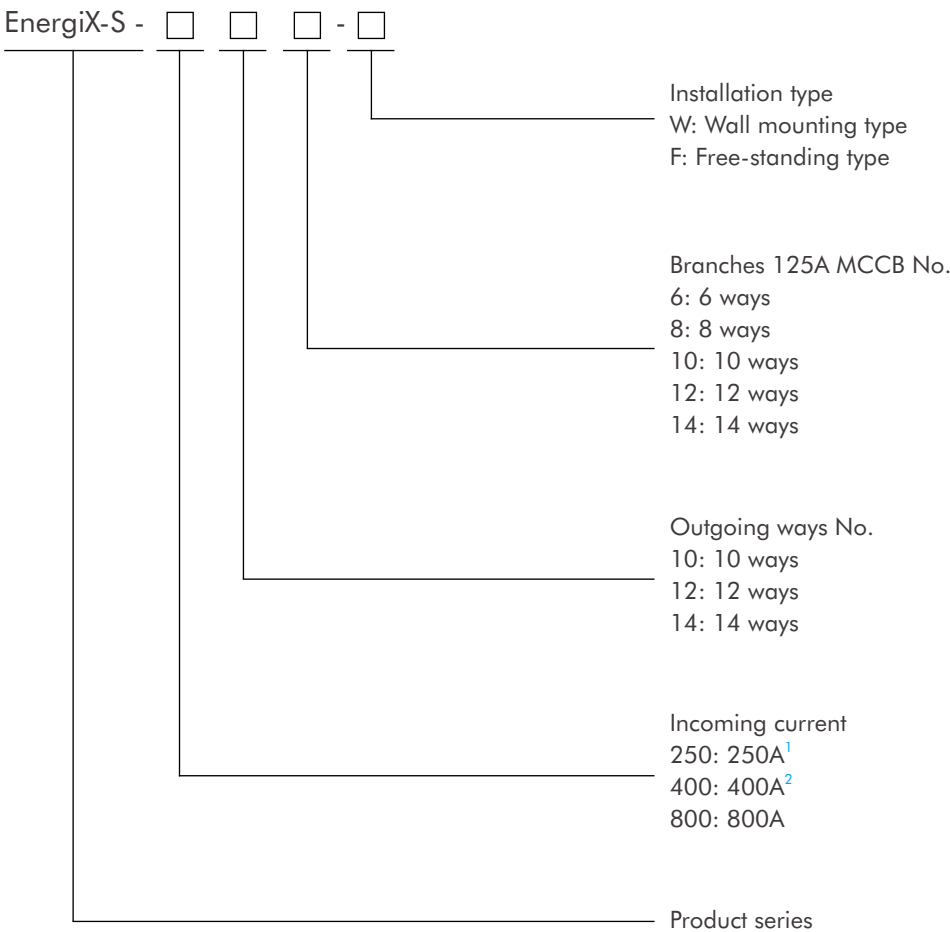


Industrial



Residential

Type designation



¹: For 250A current level board, outgoing MCCBs are all 125A, there is no 250A outgoing MCCB.
²: For 400A and 800A current level board, maximum number of 250A outgoing MCCB branches is 4.

Transportation and installation

6.1 Transportation

- Only after all the assembly is complete and inspected, it can be packed and transported.
- It is packed separately for easy transportation.
- When the products arrive at the destination, should first check whether the packing is complete.
- Erect transport, do not tilt or tip over.
- If horizontal transportation is necessary due to special circumstances, the operating surface should be up.
- When using the pry bar during handling, should pay attention to avoid damaging the board body.

6.2 Installation guide

Installation site requirements:

- After the civil construction of the power distribution room where the board is to be installed is completed, the structure, size and embedded parts of the power distribution room meet the design requirements. There is no water or leakage in the power distribution room, and the scene is clean.
- For wall-mounted distribution rooms, the corresponding installation positions should be reserved.
- Complete construction drawings and equipment technical data. Professional construction and technical personnel with construction qualifications are in place.

Check the equipment unpacking:

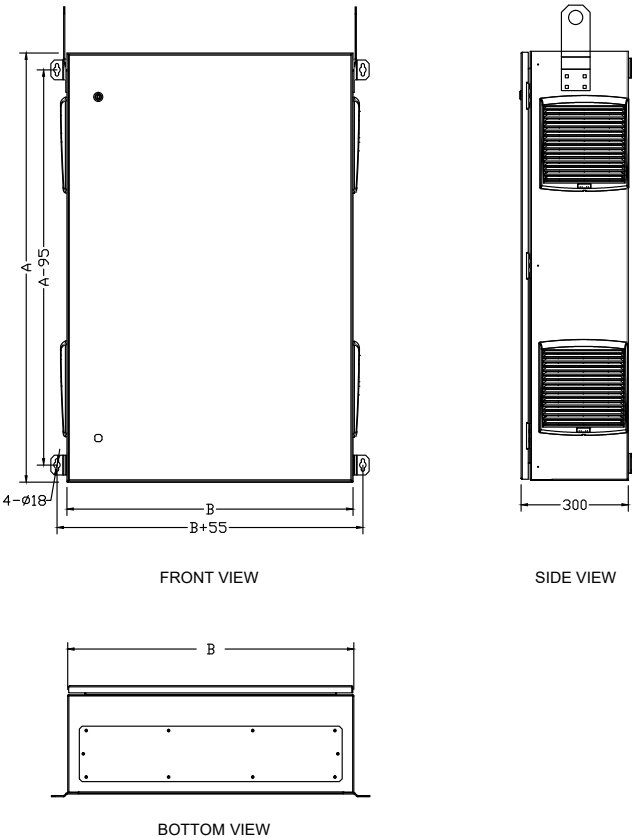
- The installation and construction unit shall conduct unpacking inspection of the equipment, and keep records of unpacking inspection.
- Check the equipment, accessories, spare parts and their corresponding models and quantities according to the design drawings and lists. The product qualification certificate and corresponding technical files are complete.
- Appearance inspection: no damage, invisible change, no spray paint off and other phenomena, uniform color.
- Internal inspection: the internal components and accessories of the box body are firmly and reliably installed. The connection is complete.

6.0

Transportation and installation

6.3 Dimensions

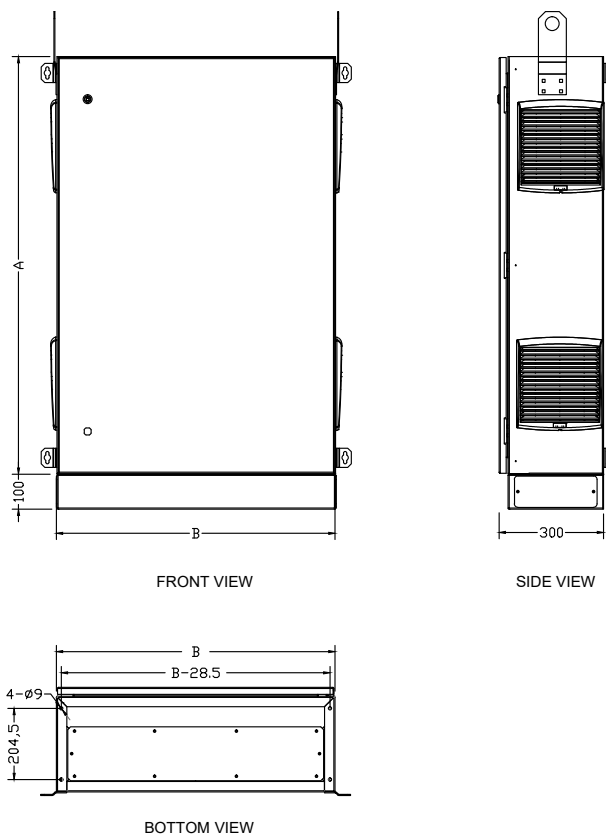
Wall mounting type



Incoming	No. ways	Branches 125A MCCB No.	Branches 250A MCCB No.	A(mm)	B(mm)
250A	10	10	0	1200	800
	12	12	0	1400	800
	14	14	0	1400	800
400A/800A	10	10	0	1600	800
	10	8	2	1600	800
	10	6	4	1800	800
	12	12	0	1600	1000
	12	10	2	1600	1000
	12	8	4	1800	1000
	14	14	0	1600	1000
	14	12	2	1600	1000
	14	10	4	1800	1000

Transportation and installation

Free-standing type



Incoming	No. ways	Branches 125A MCCB No.	Branches 250A MCCB No.	A(mm)	B(mm)
250A	10	10	0	1200	800
	12	12	0	1400	800
	14	14	0	1400	800
400A/800A	10	10	0	1600	800
	10	8	2	1600	800
	10	6	4	1800	800
	12	12	0	1600	1000
	12	10	2	1600	1000
	12	8	4	1800	1000
	14	14	0	1600	1000
	14	12	2	1600	1000
	14	10	4	1800	1000

Asia Pacific

China | Global HQ

Zhejiang CHINT Electric Co., Ltd.

Address: A3 Building, No. 3655 Sixian Road, Songjiang Shanghai 201614.
Tel: +86 21 5677 7777
Fax: +86 21 5677 7777
Email: global-sales@chintglobal.com
Website: www.chintglobal.com

Singapore | Asia Pacific HQ

CHINT Global Pte Ltd

Address: 8 Kallang Avenue, #04-06/09 Aperia Office Tower 1, Singapore 339509.
Tel: +65 6329 3110
Fax: +65 6329 3159
Website: www.chintglobal.com

Sunlight Electrical Pte Ltd

Address: 1 Third Chin Bee Road, Singapore 618679.
Tel: +65 6741 9055
Fax: +65 6265 4586
Email: sales@sunlightgroup.com
Website: www.sunlightgroup.com

India

CHINT India Energy Solution Private Limited

Address: Discovery Tower, Plot No. A-17, Ground Floor Industrial Area Sector 62 Noida, India 201309.
Tel: +91 1202 9750 57
Email: marketing@chint.co.in
Website: www.chint.co.in

Philippines

CHINT Electric Co., Ltd

Address: Unit 201, Taipan Place, F. Ortigas Jr. Road, Ortigas Center, Pasig City, Metro Manila, Philippines.
Tel: +63 967 273 0174 / +63 977 017 6320
Email: liq07@chintglobal.com / wencell@chintglobal.com
Website: www.chintglobal.com

Indonesia

PT. CHINT Indonesia

Address: Kompleks Prima Center I, Blok C9-10, Jl. Pesing Poglar Jl. Pool PPD No. 11, RT.9/RW.2, Cengkareng, Jakarta Barat.
Tel: +62 21 5436 3000
Email: sales@chint-indonesia.com
Website: www.chint-indonesia.com

Vietnam

CHINT Vietnam Holding Co., Ltd

Address: So 2Bis-4-6, Le Thanh Ton, P. Ben Nghe Quan 1, Ho Chi Minh, Vietnam.
Tel: +84 0283 8270 015
Email: marketing.vn@chintglobal.com
Website: www.chintglobal.vn

Sunlight Electrical (VN) Co., Ltd

Address: 20 Doc Lap Ave, VSIP, Thuan An City, Binh Duong Province, Vietnam.
Tel: +84 0274 3743 505
Email: sales.sev@sunlightgroup-vn.com.vn
Website: www.sunlightvietnam.com.vn

Cambodia

CHINT (Cambodia) Power Equipment Co., Ltd

Address: No.15, St. 542, Sangkat Boeung Kok 1, Khan Toul Kork, Phnom Penh, Cambodia.
Tel: +855 23 231 077
Email: lbin3@chintglobal.com
Website: www.chintglobal.com

SchneiTec CHINT Co., Ltd

Address: Ansor Kdam Village, Sna Ansa Commune, Krakor District, Pursat Province, Cambodia
Tel: +855 09 5353 268
Email: liubin@schneitec-chint.com.kh / info@schneitec-chint.com.kh
Website: www.schneitec-chint.com.kh

Latin America

Brazil

CHINT Elétricos América do Sul Ltda.

Add: Av. Paulista, 1765 - Edifício Scarpa - Conjunto 22, Bela Vista - CEP 01311-200 - São Paulo - SP
Tel.: +55 (11) 3266-7786
E-mail: chintbr@chint.com

Peru

CHINT LATAM (PERU) S.A.C.

Add: Av. Camino Real No.348, Torre El Pilar, Oficina 603, San Isidro, Lima 27, Peru
Tel: +51 1 763 4917
Email: chintlataperu@chint.com

Ecuador

CHINT ELECTRICS (HONG KONG) LIMITED (Ecuador Branch)

Add.: Calle: REP.DEL SALVADOR Número: 10-84 Intersección: AV NACIONES UNIDAS
Edificio: CENTRO COMERCIAL MANSION BLANCA
E-mail: lufz@chintglobal.com