

CHNT

Empower the World



Exclusive accessories used in Energix-M

Exclusive accessories used in EnergiX-M

There are some exclusive accessories used in CHINT brand new low voltage switchgear EnergiX-M, which had passed the type test by Dekra.

Including busbar supports, locks, hinges, antimagnetic aluminum blocks and other key accessories which can affect switchgear's structural and electrical characteristics. These accessories had been tested in corresponding physical test and chemical analysis to ensure safe and reliable use.

With people's higher and higher demand for the quality and safety of the switchgear, the role of the key accessories of switchgear is increasingly prominent.

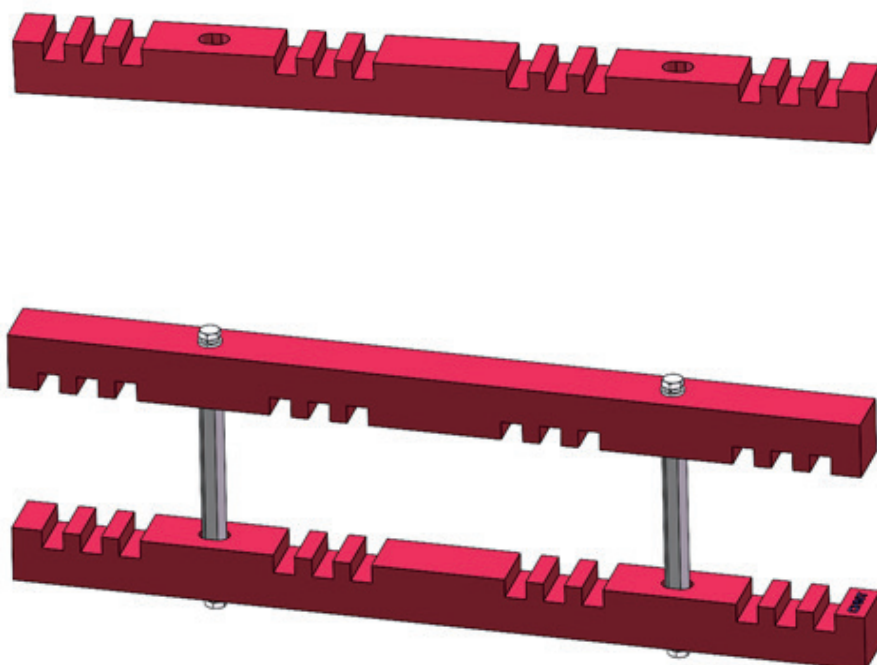


High strength busbar support

CHINT brand new busbar support, used to support and fix the busbar, playing the function of insulation and fixing. The busbar support has the characteristics of high strength, easy installation and high temperature resistance. Adopting high strength hexagonal column profile to fix busbar, so it can withstand the impact of high current. It's Icw test by Dekra 65kA/3s has been passed in CHINT's EnergiX-M TTA switchgear.

This busbar support material is GPO-3, which passed the relevant fire retardancy test V0 level test, glowing wire test, high temperature test and other related performance tests. It's safe and reliable, suitable for high-end projects.

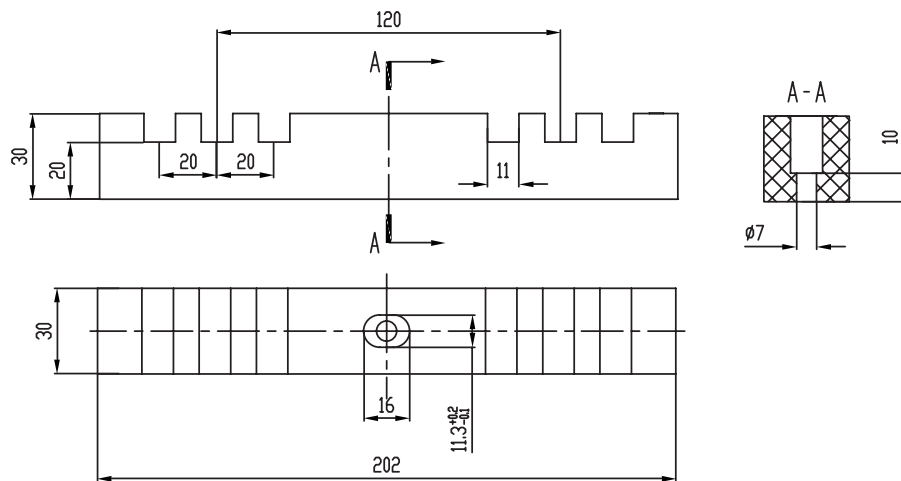
This busbar clamp is divided into 2P/3P/4P, each phase specification can support up to 3 busbars.



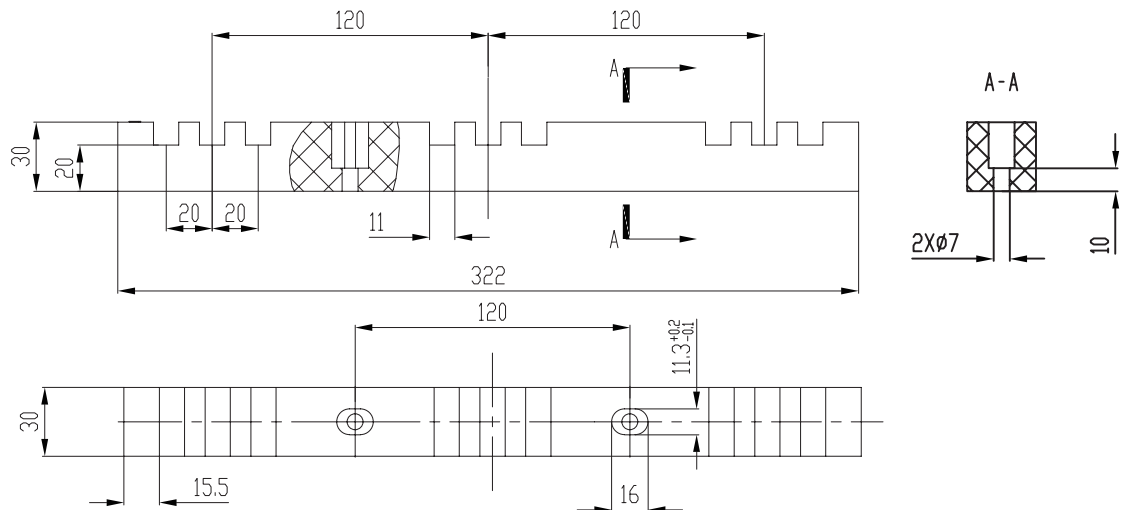
Ordering code	Phase	Maximum busbar dimension
8ZTV.111.0022W	2P	2*3*X ¹
8ZTV.111.0023W	3P	3*3*X
8ZTV.111.0010W	4P	4*3*X

¹: X adjustable, this size is only related to the length of the hexagonal column profile, the busbar support can be adapted. Under normal conditions, X can be up to 150mm.

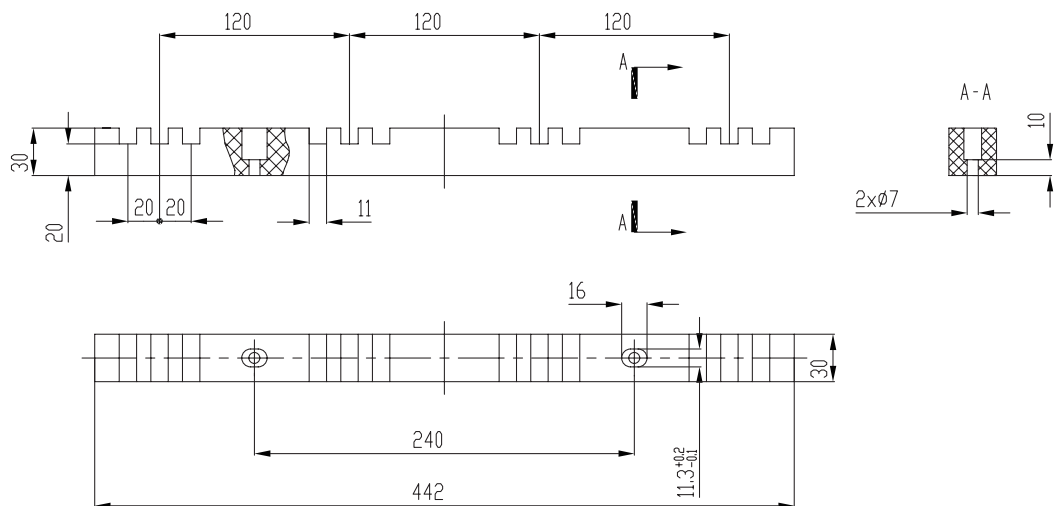
2P busbar support dimensions:



3P busbar support dimensions:



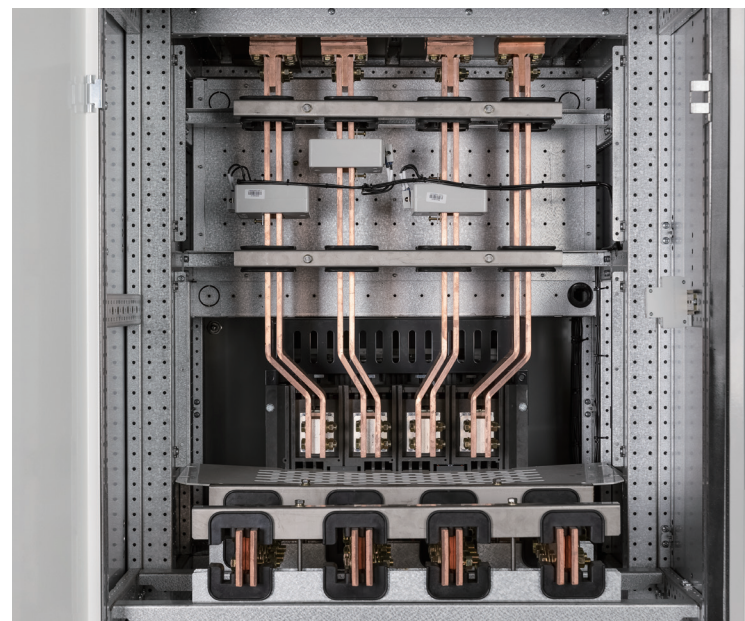
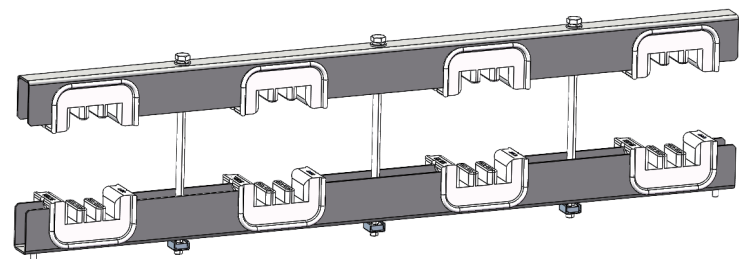
4P busbar support dimensions:



Busbar support

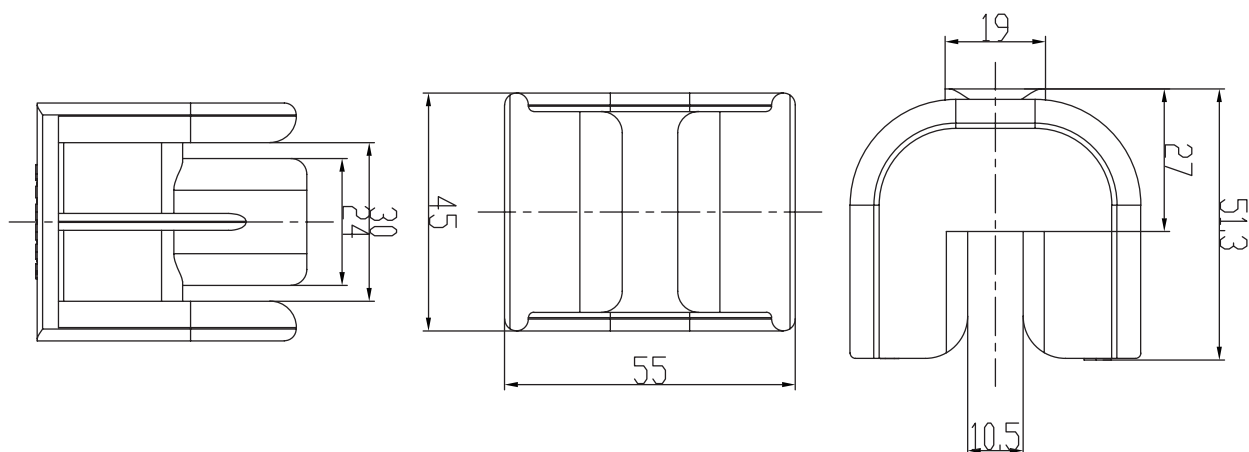
The following busbar support is an assembly one made of PA material. It has the characteristics of easy installation, economy and high adaptability. It's lcv test by Dekra 65kA/3s has been passed in CHINT's EnergiX-M TTA switchgear, it also passed the relevant fire retardancy test V0 level test, glowing wire test, high temperature test and other related performance tests.

This busbar support is divided into one single bar support, double bars support and three bars support. The sheet metal parts of this busbar support can be produced by the local panel builder, and customers can only buy the black busbar support body.

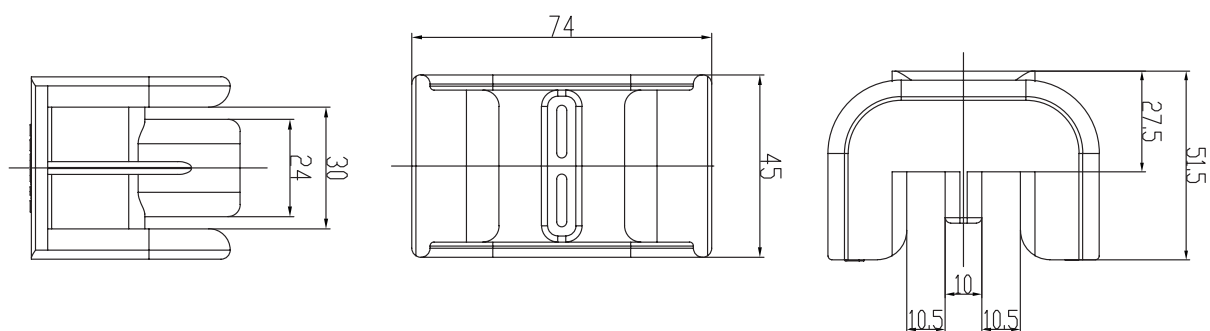


Ordering code	Remark
8ZTV.111.0026W	1*10 bar
8ZTV.111.0024W	2*10 bar
8ZTV.111.0025W	3*10 bar

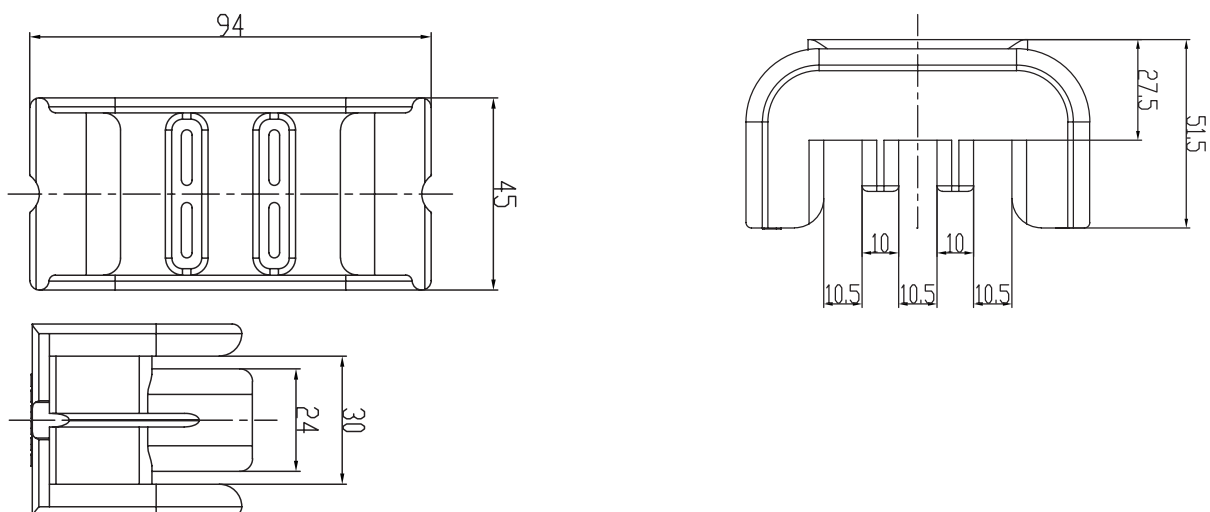
One single bar support dimensions:



Double bars support dimensions:



Three bars support dimensions:



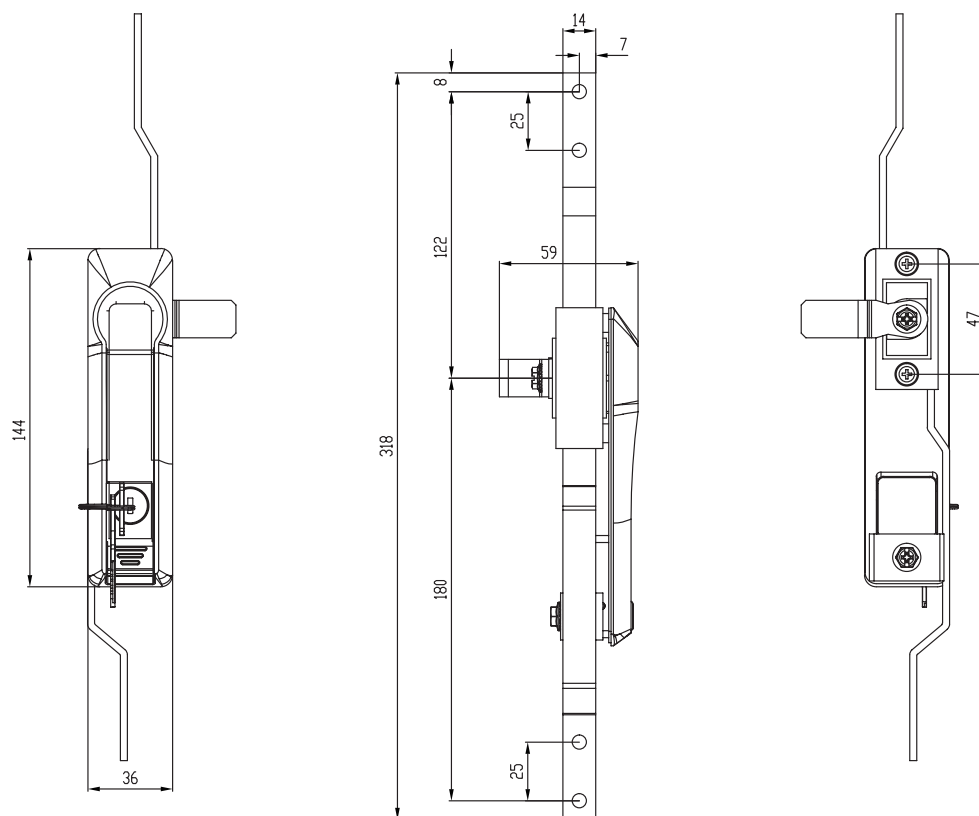
Door lock and lock accessories

Double door lock, mainly used on outer door, which can meet high ingress protection degree, meet the application of IP54. One operation can realize the top, middle and bottom three sections fixing. This lock should be matched with connecting rod, locating piece and fixing piece. One lock should be equipped with two connecting rods, four locating pieces and four fixing pieces.

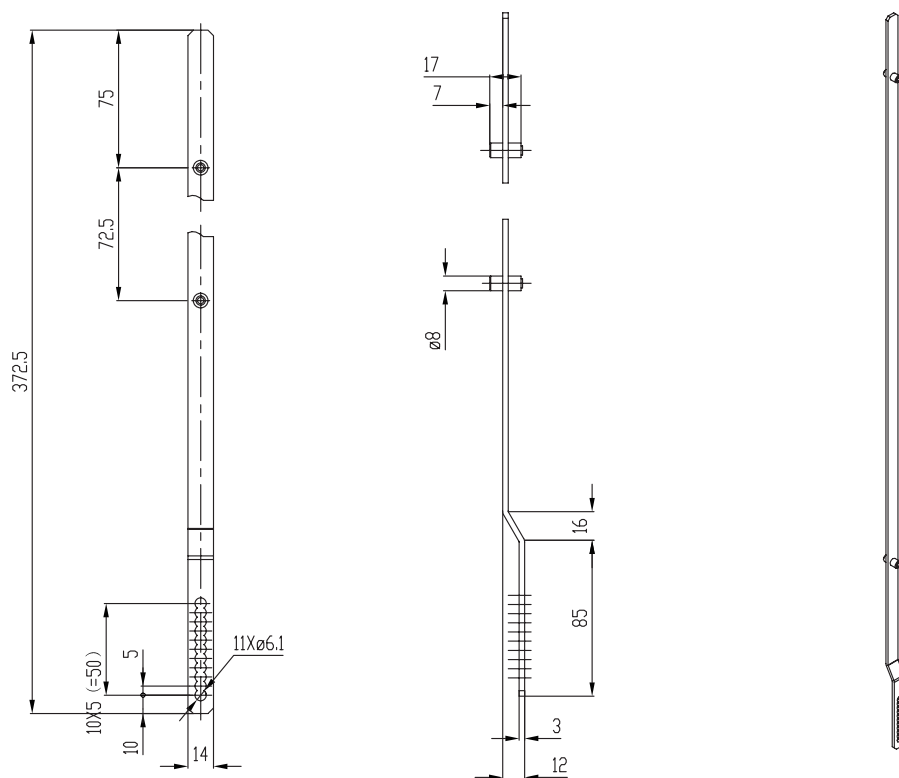


Ordering code	Remark
5ZTV.872.0009W	Lock
8ZTV.233.0007W	Connecting rod
8ZTV.271.0001W	Locating piece
8ZTV.885.0004W	Fixing piece

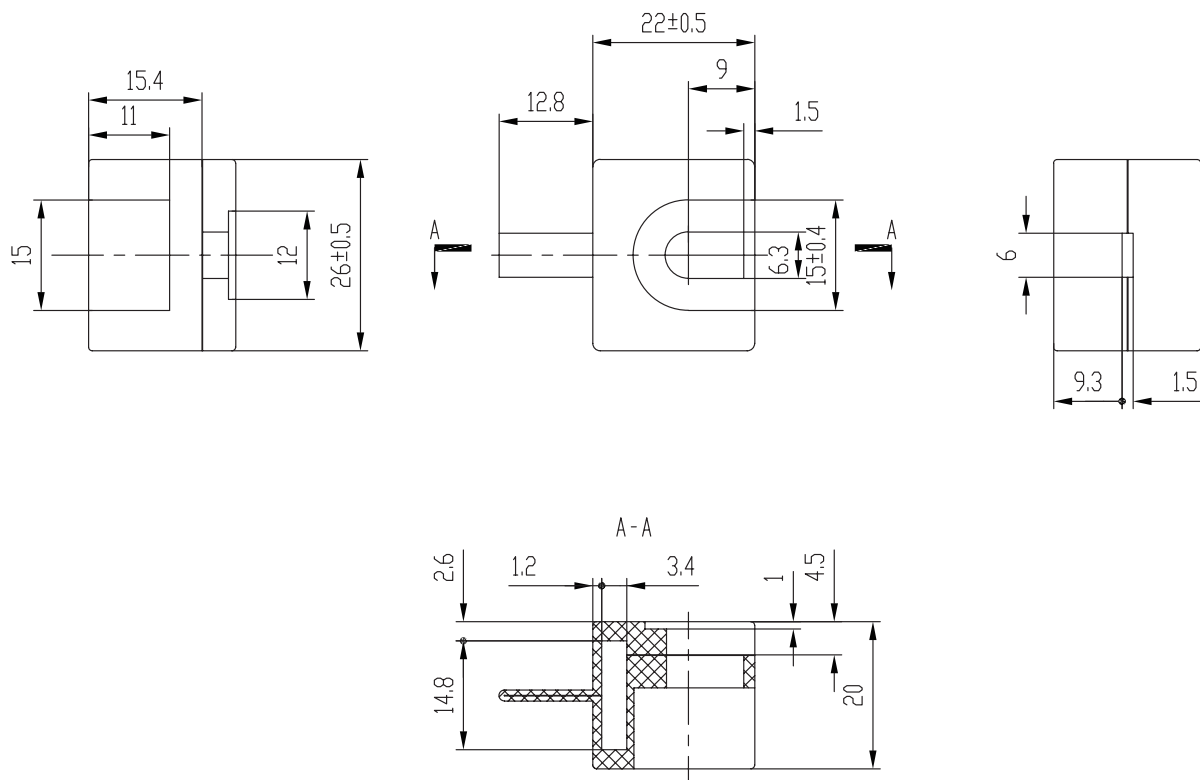
Lock dimensions:



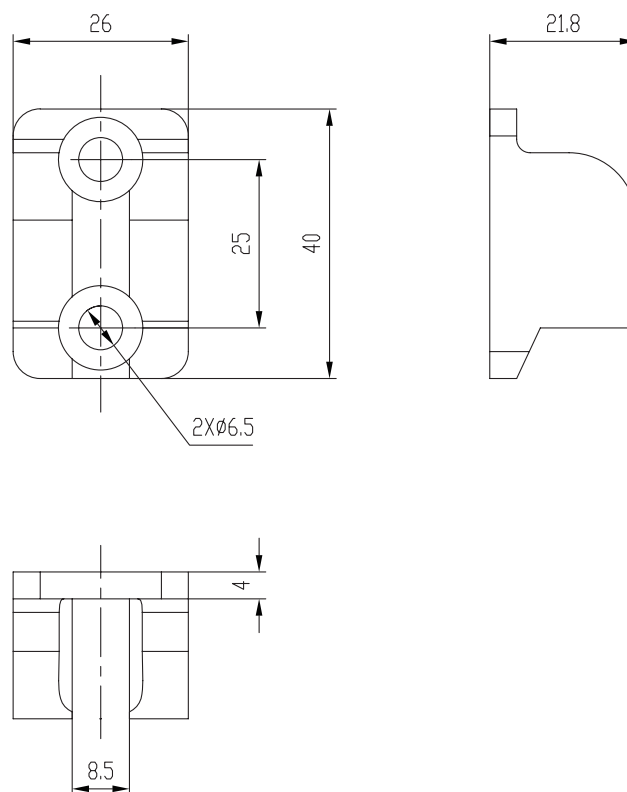
Connecting rod dimensions:



Locating piece dimensions:

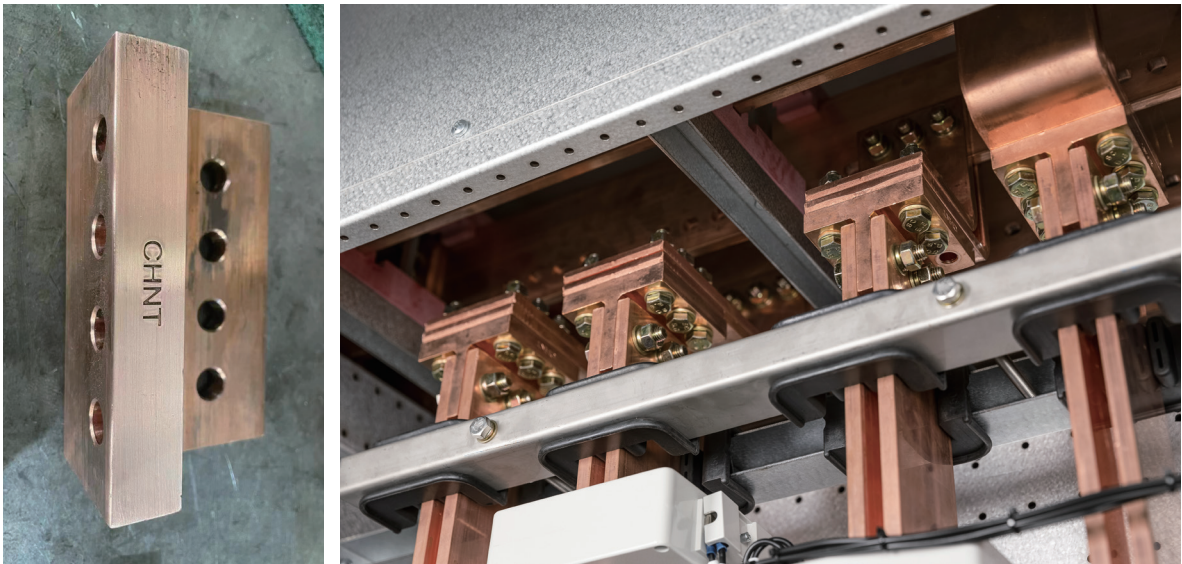


Fixing piece dimensions:



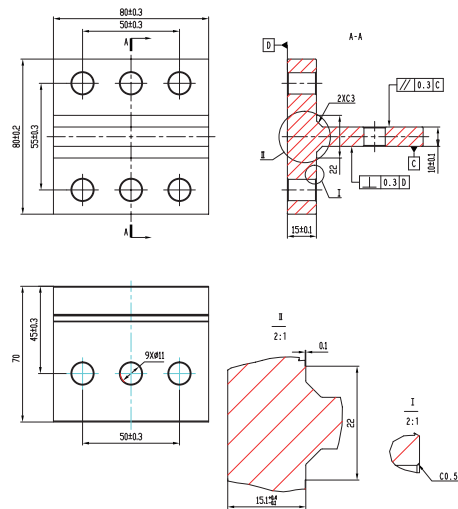
Copper junction piece

CHINT brand new design copper junction piece, which can be used as an important adapter between ACB outgoing bar and horizontal busbar, saving excess folded bar and convenient installation. Copper junction piece can fit 80mm width bar, 100mm width bar and 120mm width bar.

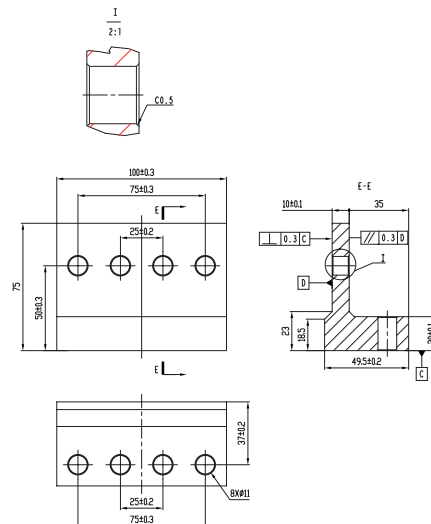


Ordering code	Remark
8ZTV.585.0005W	80T, used for 80mm width bar
8ZTV.585.0004W	100L, used for 100mm width bar
8ZTV.585.0009W	120L, used for 120mm width bar

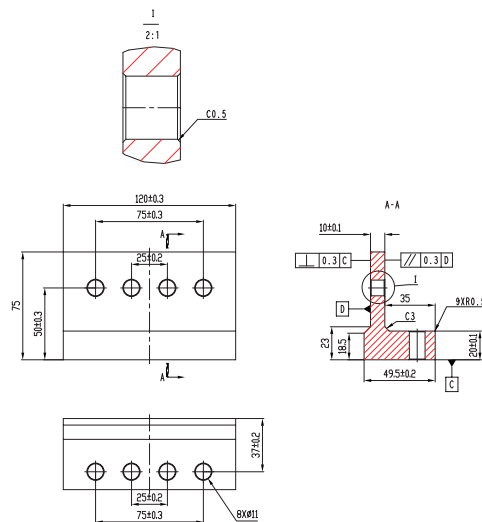
80T copper junction piece dimensions:



100L copper junction piece dimensions:

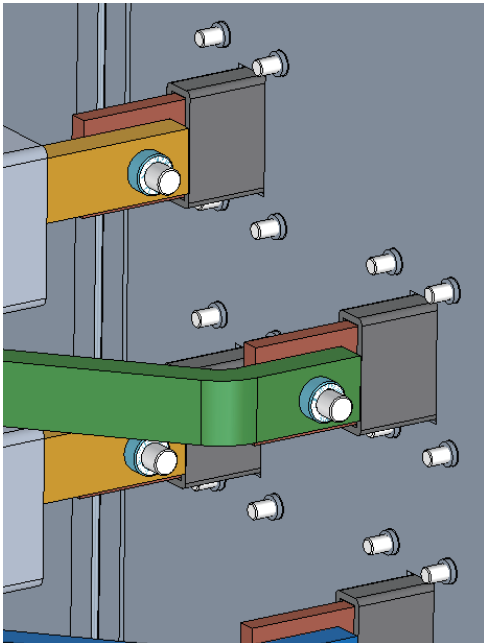


120L copper junction piece dimensions:



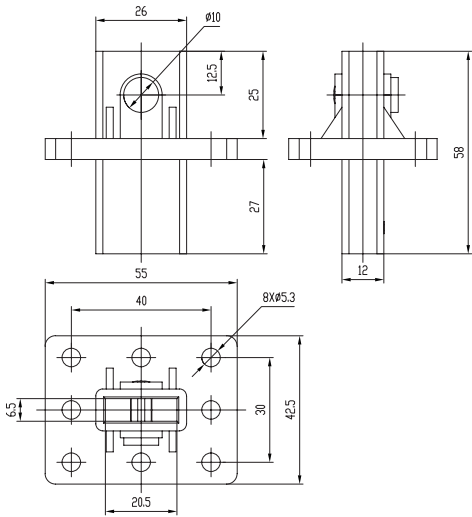
Insulating bushing

Insulating bushing used to connect the outgoing bar of the MCCB to the rear side outgoing connections, which can realize fast connection and effective insulation.

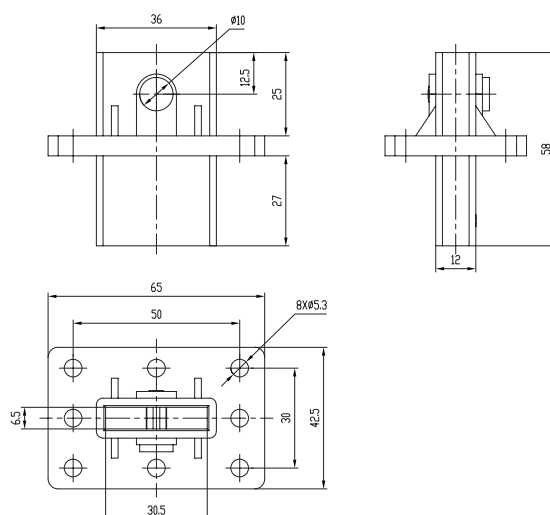


Ordering code	Remark
6ZTV.285.0001W	6*20
6ZTV.285.0002W	6*30
6ZTV.285.0004W	6*40
6ZTV.285.0003W	6*50

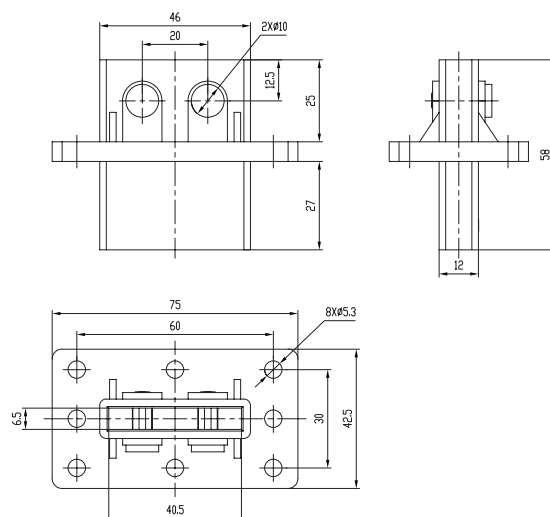
6*20 insulating bushing dimensions:



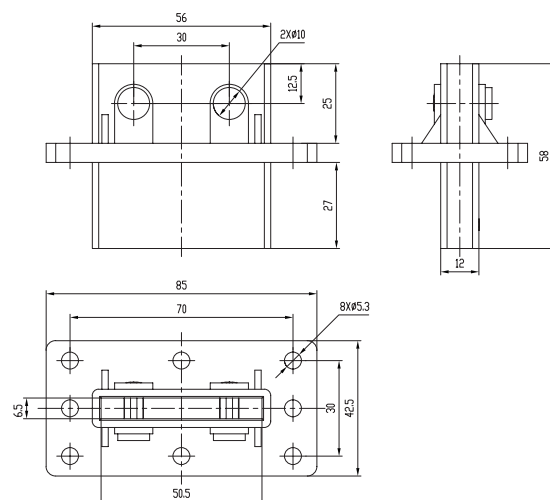
6*30 insulating bushing dimensions:



6*40 insulating bushing dimensions:

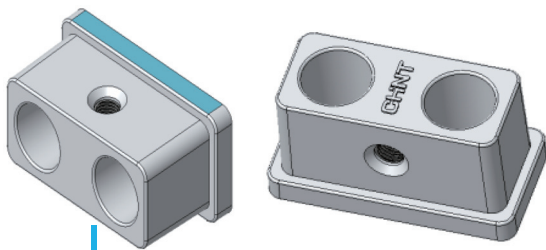


6*50 insulating bushing dimensions:

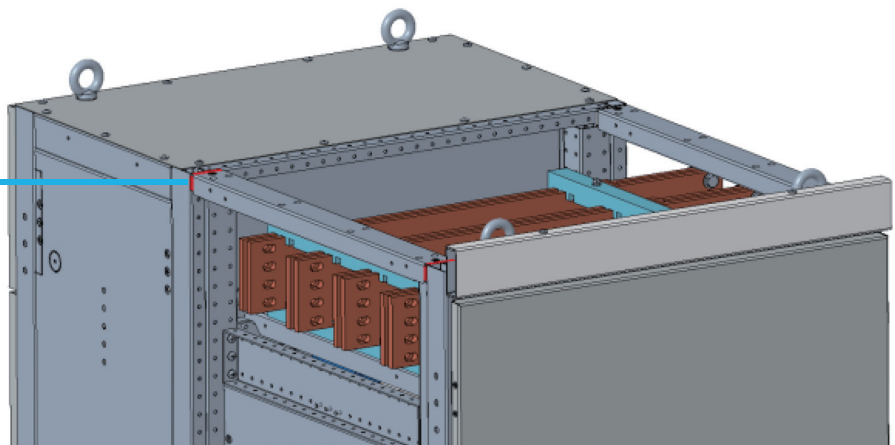


Antimagnetic aluminum block

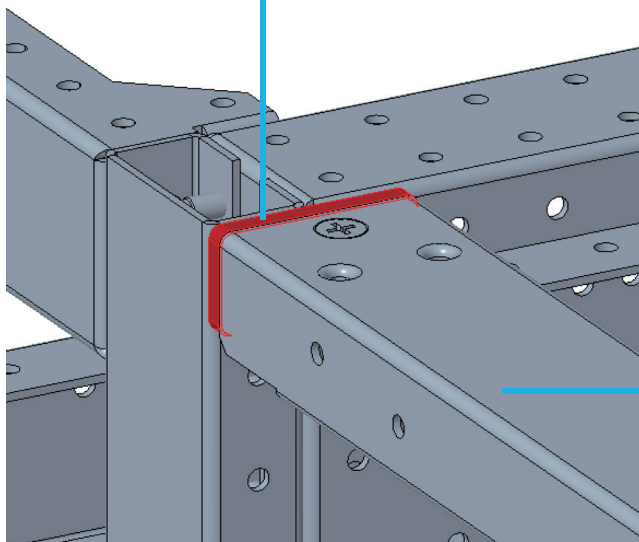
CHINT brand new design aluminum alloy part, can effectively block the eddy current circuit in the main busbar area. Because of the special design of this block, top beam can be disassembled easily. And the horizontal busbar can be pre-installed in each panel in factory, easy to connect on site and save time.



Aluminum alloy part



Gap between the beam and the enclosure

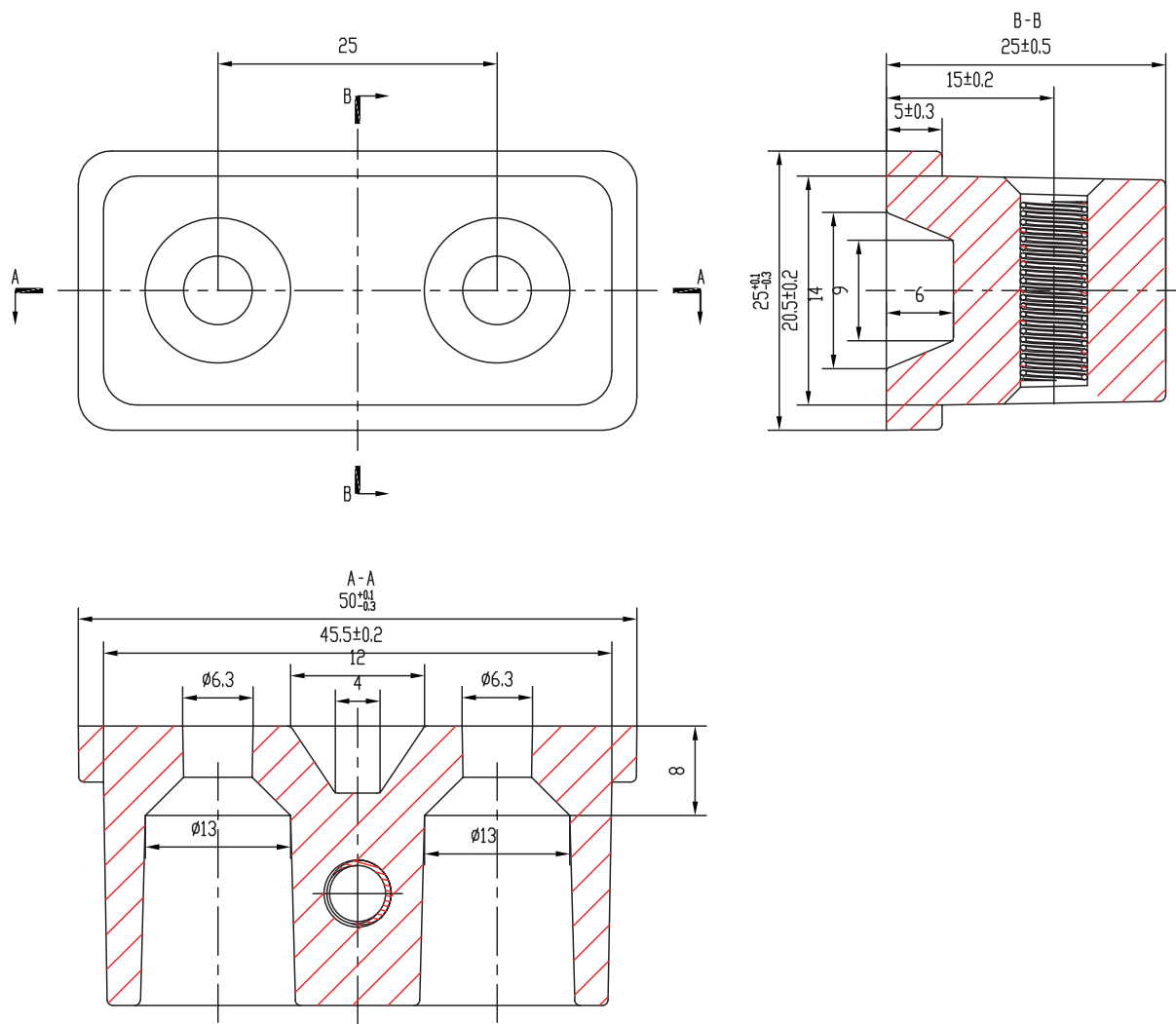


$\geq 3200A$, this beam will be made of stainless steel

Ordering code

6ZTV.421.0001W

Antimagnetic aluminum block dimensions:



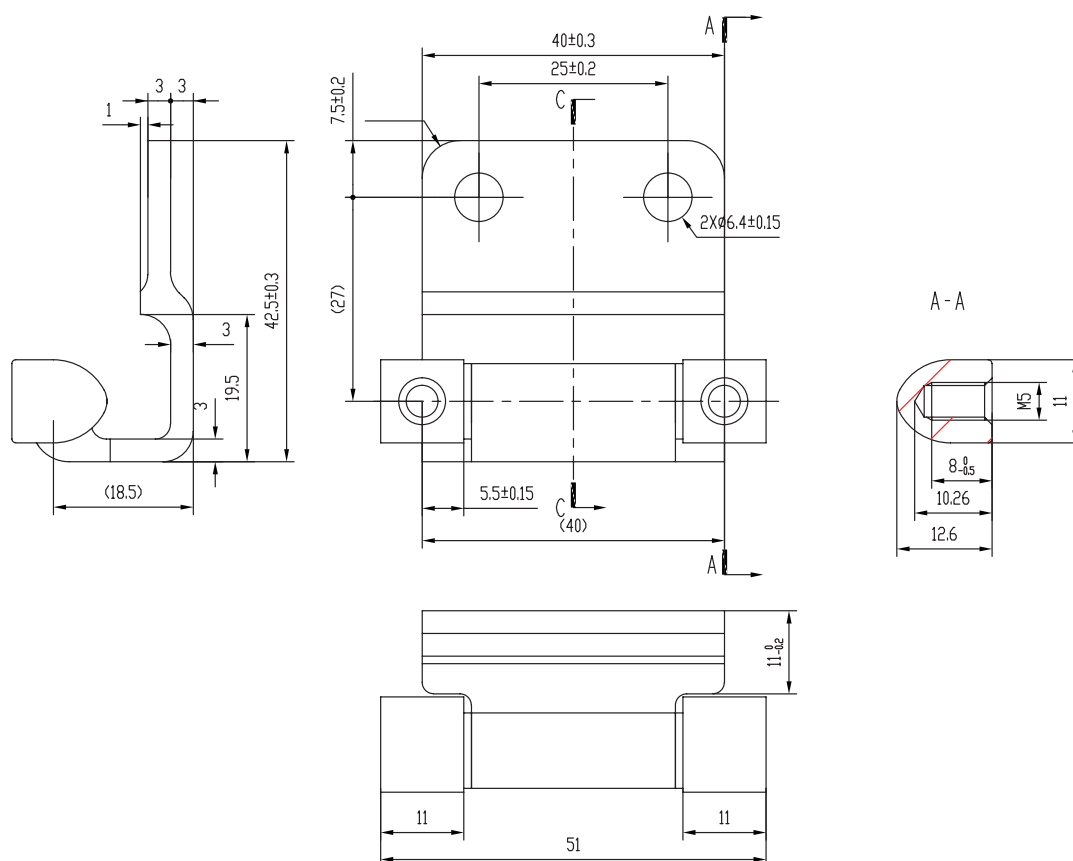
Hinge

CHINT brand new developed hinges have passed Dekra IP54 test to achieve high protection, suitable for dusty project and water treatment. At the same time, this hinge has high corrosion resistance and has passed Dekra severity test A, which means six cycles of 24 h each to damp heat cycling test followed by two cycles of 24 h each to salt mist test.



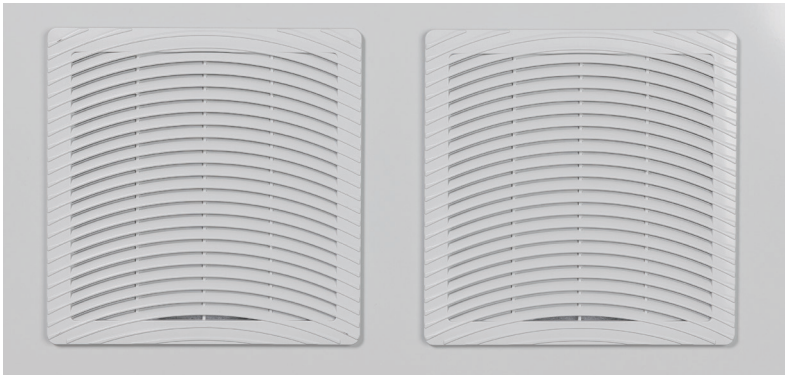
Ordering code	6ZTV.751.0001W
---------------	----------------

Hinge dimensions:



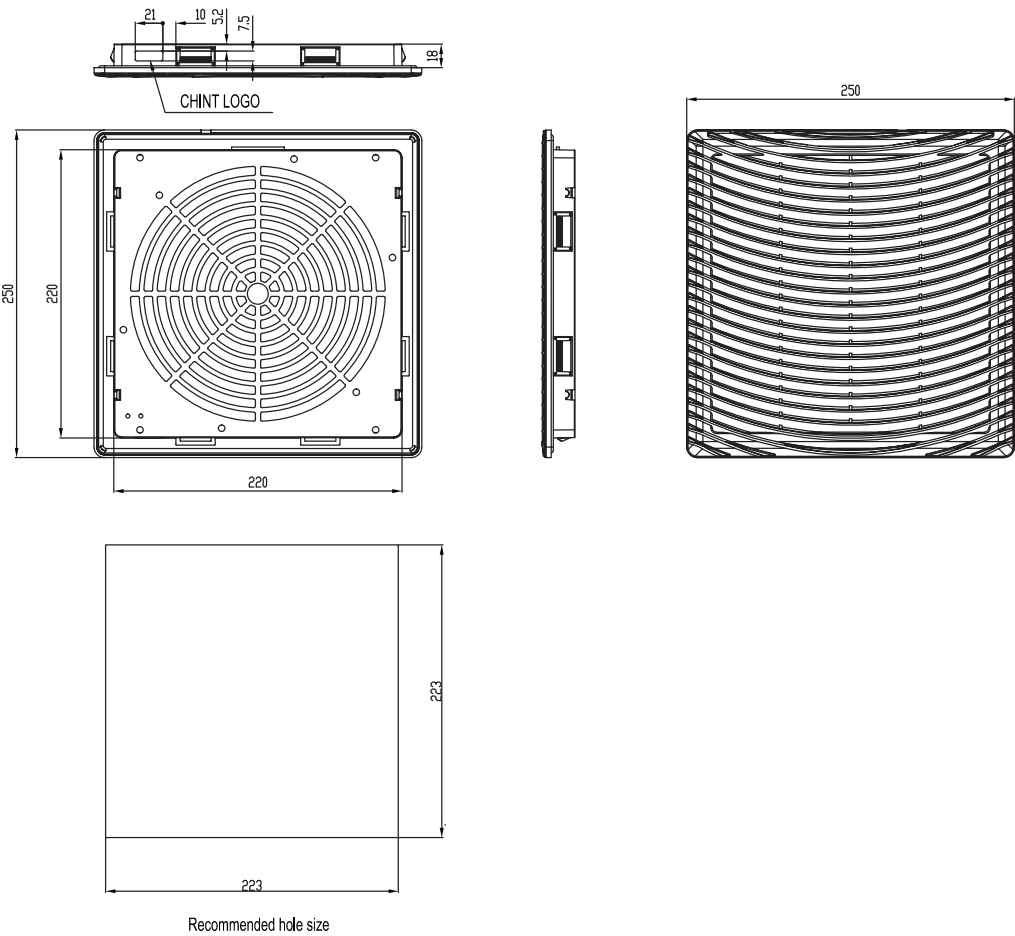
Filter

Filter is a key part of the low voltage switchgear to achieve high ingress protection degree and good ventilation environment. This filter is IP54 degree, with 20mm thickness cotton in the middle to effectively prevent dust from entering. The drain tank design by the filter itself can effectively prevent the damage of water to low voltage switchgear. At the same time, the filter can achieve good natural ventilation or forced ventilation, prevent the temperature of components and copper bar is too high, increase the service life of switchgear and protect the use of switchgear safety.



Ordering code	6ZTV.751.0001W
---------------	----------------

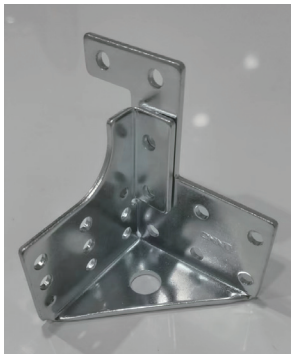
Filter dimensions:



Tee-junction

This tee-junction parts are not used in EnergiX-M. But they can play an important role in the switchgear's frame which composed by C-profiles.

Tee-junction parts can realize the connection of three C-profiles. By specially designed self-bending, it has the characteristics of high strength and convenient installation. Tee-junction parts are symmetrical, divided into left and right parts. One switchgear needs to be connected with eight tee-junction parts, including four left parts and four right ones.

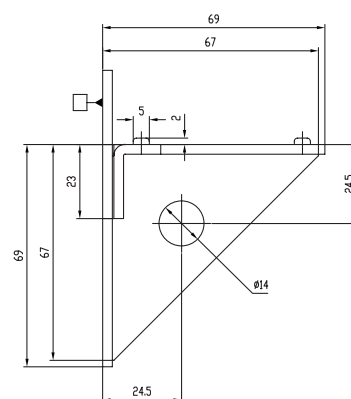
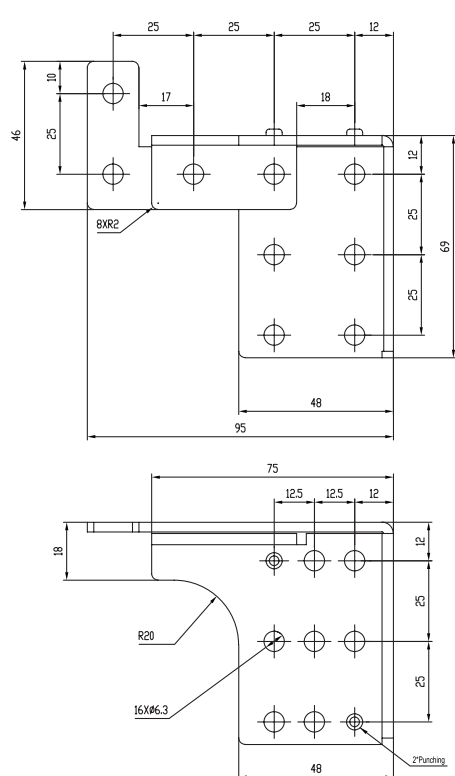


Suitable for the connection of various sizes of frame



Ordering code	Remark
8ZTV.040.0200W	Right tee-junction
8ZTV.040.0201W	Left tee-junction

Right tee-junction dimensions:



Left tee-junction dimensions:

