



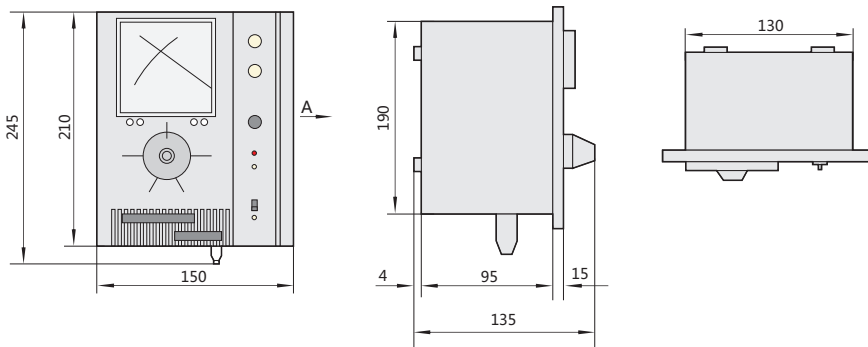
### 3.7 Manual ordinary type

Table 1

Model No.	JD <sub>2</sub> <sup>1</sup> A-11	JD <sub>2</sub> <sup>1</sup> A-40	JD <sub>2</sub> <sup>1</sup> A-90
Supply voltage	~220V(±10%) 50Hz~60Hz		
Maximum output rating(direct current 90V)	3.15A	5A	8A
Controllable power of motor (kW)	0.55~11	15~40	45~90
Tachogenerator	Ratio of transmission of Phase-III i-f voltage is ≥2V/100r/min		
Relative speed variation	≤2.5%		
Steady velocity precision	≤1%		
Governor deflection (r/min)	1300~100	1300~100	1300~130

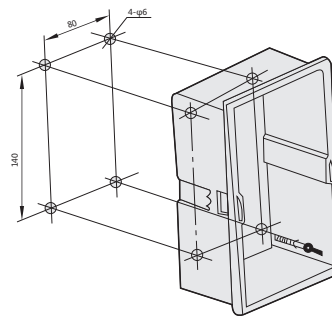
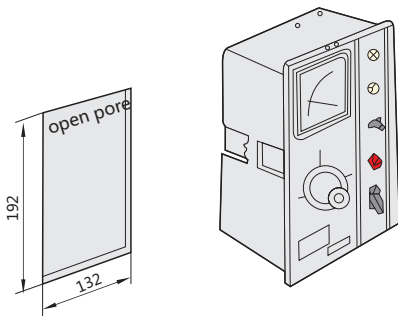
### 4. Overall and mounting dimensions

JD<sub>2</sub><sup>1</sup>A-type external dimensions

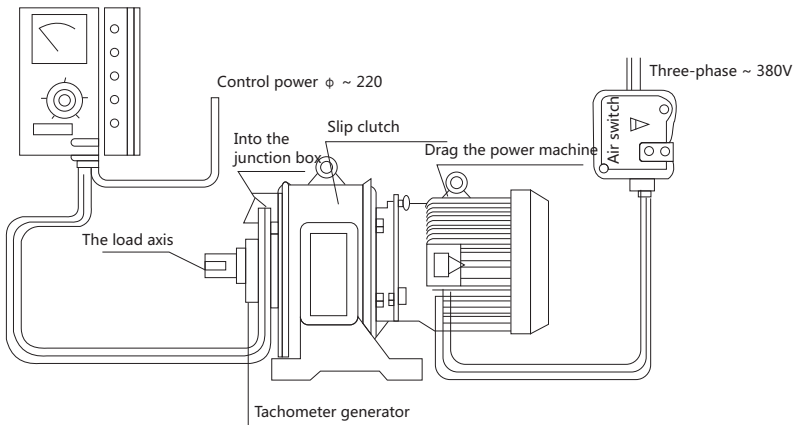


JD<sub>2</sub><sup>1</sup>A-type plate embedded-type installation and the size of the holes controller

JD<sub>2</sub><sup>1</sup>A-type used for wall-hung type installation size



Link connecting control casing and asynchronous motor with electromagnetic speed regulation



## 5. Ordering information

- 5.1 When ordering, shall give clear indicate of type,tachometer form,operation type, controlled power of motor and quantity.
- 5.2 If there are other special requirements, shall be indicated
- 5.3 ordering example: 200 JD1A-40, represent JD1A with indicating pointer,manual conventional type, controlled power of motor 40kW  
200 of motor controllers with electromagnetic speed regulation.