

NP8 Series
Pushbutton

User Instruction

Safety Warning

- ① Only professional technicians are allowed for installation and maintenance.
- ② Installation in any damp, condensed-phase environment with inflammable and explosive gas is forbidden.
- ③ When the product is being installed or maintained, the power must be switched off.
- ④ You are prohibited from touching the conductive part when the product is operating.

1 Use Purpose

NP8 series pushbutton is used in industrial control circuit with frequency of AC 50Hz (or 60Hz), rated operating voltage up to 415V or DC operating voltage up to 250V. It is used to control electromagnetic starter, contactor, relay and other electrical circuits. Pushbutton with indicator is also suitable for applications that need signal light indication.

2 Main Technical Parameters

Table 1 Environmental conditions and main technical parameters

Environmental conditions	Ambient temp. (°C)	-5°C~+40°C, average temperature should not exceed +35°C within 24h				
	Hot and humid	Relative humidity should not exceed 50% at +40°C; up to 90% at +20°C;				
	Altitude	No influence below 2000m				
	Pollution class/ installation	Class 3/II				
Technical parameters	Application category	AC-15			DC-13	
	Rated operating voltage U_e (V)	415	240	120	250	125
	Rated operating current I_e (mA)	1.9	3	6	0.27	0.55
	Rated insulation voltage U_i (V)	415				
	Conventional thermal current I_{th} (A)	10				
	Rated impulse withstand voltage U_{imp} (kV)	2.5				
	Head protection class	IP65				
	Rated operating voltage of button with indicator U_e (V)	AC/DC 6, 12, 24, 36 AC 110~230				
	Mechanical life	3 million times for flat type, mushroom type and button with indicator; 100000 times for knob type, self-locking type and key type				
	Electrical life	AC 1 million times/DC 250000 times for flat type, mushroom type and button with indicator, 100000 times for knob type, self-locking type and key type				

3 Installation

1) See Figure 1 and Table 2 for overall and installation dimensions.

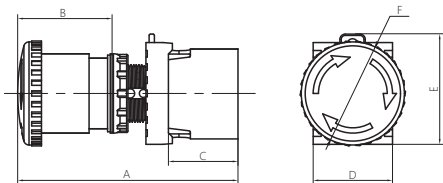


Figure 1 Overall dimensions




Table 2 Overall and installation dimensions

Unit:mm

Model	A	B	C	D	E	F	Diameter of mounting hole
NP8-11BN (BND)	61	13	27	31	46	/	Φ22~Φ25
NP8-11GN (GND)	69	20				/	
NP8-11M (MD)	75	28				Φ41/61	
NP8-11X (XD)	78	30				/	
NP8-11S (SD)	61	12				/	
NP8-11ZS	83	35				Φ31/41/61	
NP8-11Y	88	43				/	
NP8-D	62	15				/	

2) See Table 3 for wire selection and tightening torque.

Table 3 Wire selection and tightening torque

Terminal tightening torque N.m	Wire (Hard) mm ²	Wire (Soft) mm ²	Remarks
			1) Use hard wire or soft wire for a single connection. One terminal can connect up to two conductors with same sectional area and type; 2) Wire strip length: 8mm.
M3.5 0.8~1.2	2× (0.5~2.5)	2× (0.5~2.5)	

3) See Figure 2 - Figure 4 for assembly and disassembly drawings.

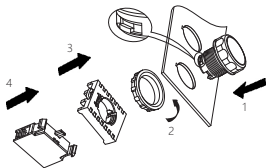


Figure 2 Assembly process

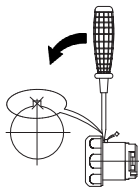


Figure 3 Pry up the locking block

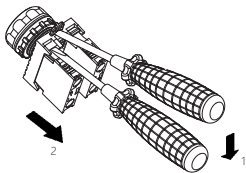


Figure 4 Dismantle the contact assembly and operation head

4 Maintenance

Tighten the terminals of the button on a regular basis.

Tighten the fixing nuts of the button on a regular basis.

Table 4 Analysis and Troubleshooting of Faults

Symptoms	Cause analysis	Troubleshooting method
The actuator of the button cannot be fixed or pulled out	The installation direction of the actuator and central adapter is not correct.	Align the square block on the side of the actuator with the blue board on the central adapter before putting it in, see Figure 2.
Screw slippage	The screws are overtightened.	Tighten the screws with specified torque.
No power, the light is off	Loose wire in the terminal.	Connect the wire properly.

5 Environmental Protection

In order to protect the environment, the product or product parts should be disposed of according to the industrial waste treatment process, or be sent to the recycling station for assortment, dismantling and recycling according to local regulations.

CHINT

QC PASS

NP8 Series
Pushbutton
IEC/EN 60947-5-1

Check 35

Test date: Please see the packing

ZHEJIANG CHINT ELECTRICS CO., LTD.

CHINT

CHINT ELECTRICS

NP8 Series
Pushbutton
User Instruction

Zhejiang Chint Electrics Co., Ltd.

Add: No.1, CHINT Road, CHINT Industrial Zone, North Baixiang,
Yueqing, Zhejiang 325603, P.R.China

E-mail: global-sales@chint.com

Website: <http://en.chint.com>

