

High Voltage Capacitor

TBBX type High-voltage Local Reactive Compensating Installation



1. General Description

TBBX type high-voltage local reactive compensating installations are cabinet type indoor installed. With rated voltage 6~10kV, rated frequency 50Hz, which are widely used in 6~10kV three-phase alternating motor to carry out reactive compensating on the spot. So as to reduce the electric energy loss, increase the quality of network voltage, improve the starting ability of electromotor. The biggest feature of the equipment is that the capacitor bank will put in while the motor start, and reset while stop. It's a new energy saving product with great effect, excel in centralized compensating.

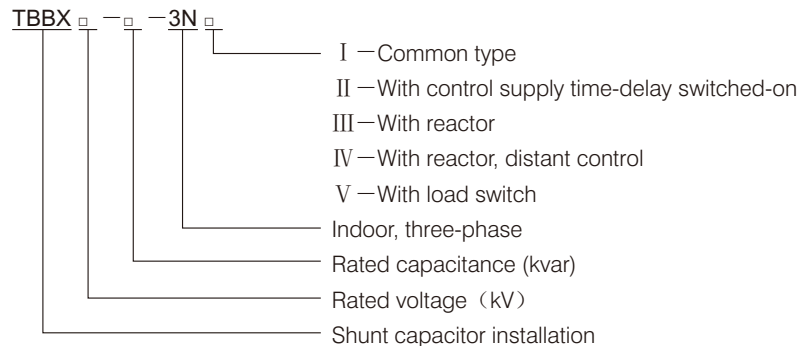
2. Executing Standards

- GB 50227-2008
- JB/T 10557-2006
- DL/T 604-2009

3. Application Ambient Conditions

- 3.1 Altitude $\leq 1000\text{m}$.
- 3.2 Indoor use only.
- 3.3 Temperature range: $-40^{\circ}\text{C} \sim +55^{\circ}\text{C}$.
- 3.4 No causticity gas, vapor, no inflammable gas, no blaze, no explosion risk, no frequent violent shake.
Do not expose it in powerful electric field & magnetic field;
- 3.5 Relative humidity: daily mean $\leq 95\%$, monthly mean $\leq 90\%$;

4. Type Meaning and Specification



High Voltage Capacitor

5. Main Technical Parameters

The parameter table of 6kV capacitor

Table 1

No.	Type	Rated voltage (kV)	Rated capability of capacitor bank (kvar)	Rated current of capacitor bank (A)	Protect fashion	Type of shunt capacitor
1	TBBX6-90-3N	6	90	8.25	The fuse protect of unit capacitor	BFM6.3/√3-30-1
2	TBBX6-120-3N	6	120	11.0	The fuse protect of unit capacitor	BFM6.3/√3-40-1
3	TBBX6-150-3N	6	150	13.75	The fuse protect of unit capacitor	BFM6.3/√3-50-1
4	TBBX6-180-3N	6	180	16.5	The fuse protect of unit capacitor	BFM6.3/√3-60-1
5	TBBX6-210-3N	6	210	19.25	The fuse protect of unit capacitor	BFM6.3/√3-70-1
6	TBBX6-240-3N	6	240	22.0	The fuse protect of unit capacitor	BFM6.3/√3-80-1
7	TBBX6-300-3N	6	300	27.5	The fuse protect of unit capacitor	BFM6.3/√3-100-1
8	TBBX6-360-3N	6	360	32.0	The fuse protect of unit capacitor	BFM6.3/√3-120-1
9	TBBX6-450-3N	6	450	41.24	The fuse protect of unit capacitor	BFM6.3/√3-150-1
10	TBBX6-600-3N	6	600	55.0	The fuse protect of unit capacitor	BFM6.3/√3-200-1

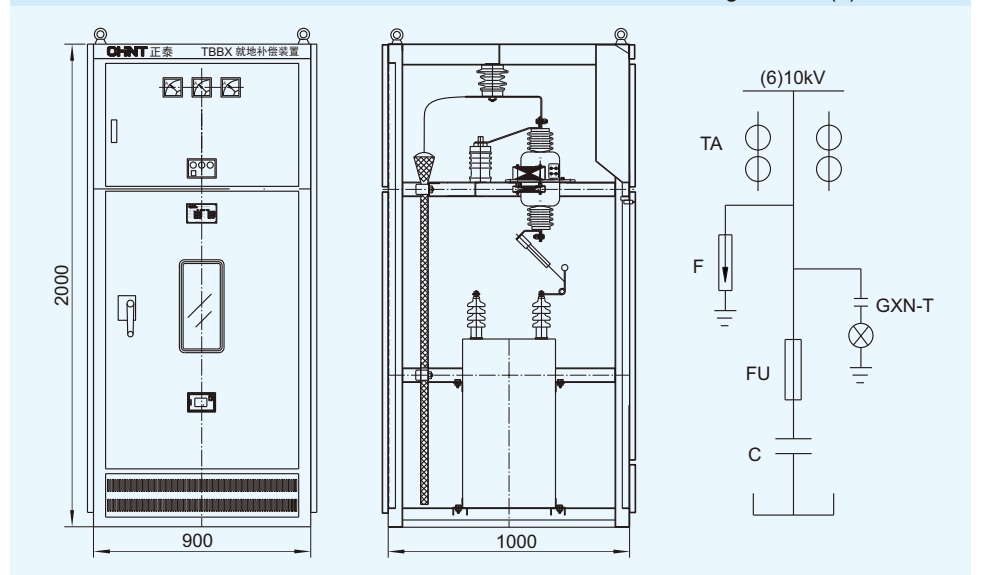
The parameter table of 10kV capacitor

Table 2

No.	Type	Rated voltage (kV)	Rated capability of capacitor bank (kvar)	Rated current of capacitor bank (A)	Protect fashion	Type of shunt capacitor
11	TBBX10-90-3N	10	90	4.95	The fuse protect of unit capacitor	BFM10.5/√3-30-1
12	TBBX10-120-3N	10	120	6.6	The fuse protect of unit capacitor	BFM10.5/√3-40-1
13	TBBX10-150-3N	10	150	8.25	The fuse protect of unit capacitor	BFM10.5/√3-50-1
14	TBBX10-180-3N	10	180	9.9	The fuse protect of unit capacitor	BFM10.5/√3-60-1
15	TBBX10-210-3N	10	210	11.55	The fuse protect of unit capacitor	BFM10.5/√3-70-1
16	TBBX10-240-3N	10	240	13.2	The fuse protect of unit capacitor	BFM10.5/√3-80-1
17	TBBX10-300-3N	10	300	16.5	The fuse protect of unit capacitor	BFM10.5/√3-100-1
18	TBBX10-360-3N	10	360	19.8	The fuse protect of unit capacitor	BFM10.5/√3-120-1
19	TBBX10-450-3N	10	450	24.74	The fuse protect of unit capacitor	BFM10.5/√3-150-1
20	TBBX10-600-3N	10	600	33	The fuse protect of unit capacitor	BFM10.5/√3-200-1

6. TBBX outline, primary connect line and fixing dimension

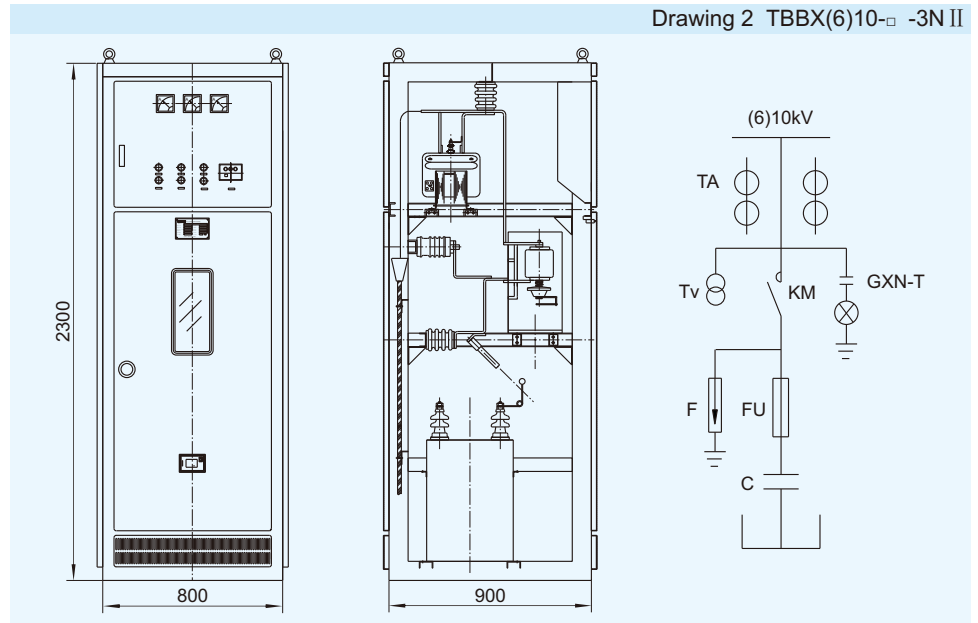
Drawing 1 TBBX(6)10-□ -3N I



High Voltage Capacitor

Type	Capacitor collocate
TBBX(6)10-□ -300/100-3N	BFM□ / $\sqrt{3}$ -100-1
TBBX(6)10-□ -400/134-3N	BFM□ / $\sqrt{3}$ -134-1
TBBX(6)10-□ -450/150-3N	BFM□ / $\sqrt{3}$ -150-1
TBBX(6)10-□ -500/167-3N	BFM□ / $\sqrt{3}$ -167-1

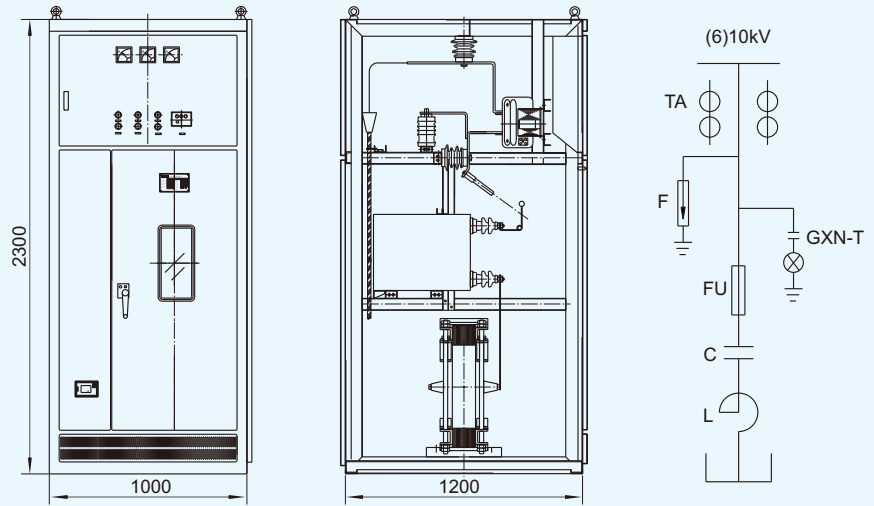
Drawing 2 TBBX(6)10-□ -3N II



Type	Capacitor collocate
TBBX(6)10-□ -300/100-AK	BFM□ / $\sqrt{3}$ -100-1
TBBX(6)10-□ -400/134-AK	BFM□ / $\sqrt{3}$ -134-1
TBBX(6)10-□ -450/150-AK	BFM□ / $\sqrt{3}$ -150-1
TBBX(6)10-□ -500/167-AK	BFM□ / $\sqrt{3}$ -167-1

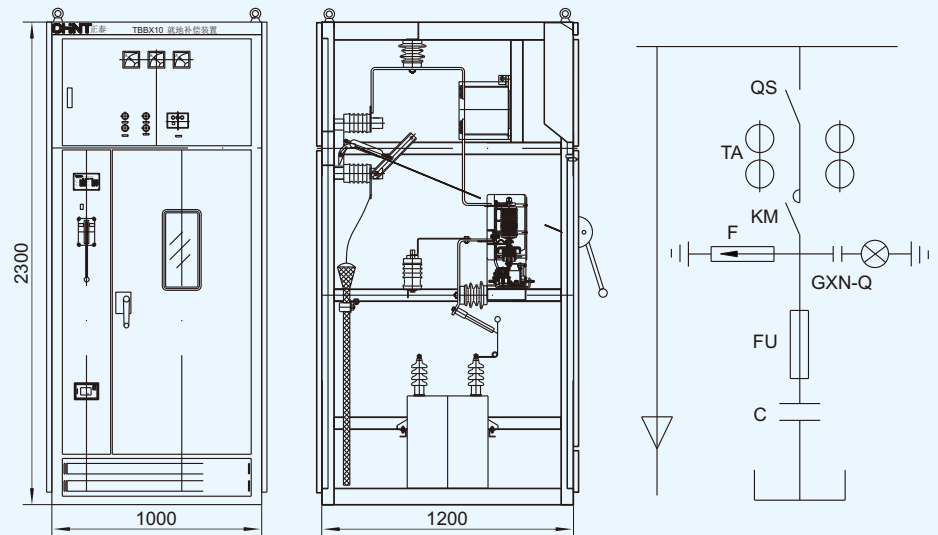
High Voltage Capacitor

Drawing 3 TBBX(6)10-□ -3NIII



Type	Capacitor collocate
TBBX(6)10-□ -300/100-3N	BFM□ / $\sqrt{3}$ -100-1
TBBX(6)10-□ -400/134-3N	BFM□ / $\sqrt{3}$ -134-1
TBBX(6)10-□ -450/150-3N	BFM□ / $\sqrt{3}$ -150-1
TBBX(6)10-□ -500/167-3N	BFM□ / $\sqrt{3}$ -167-1

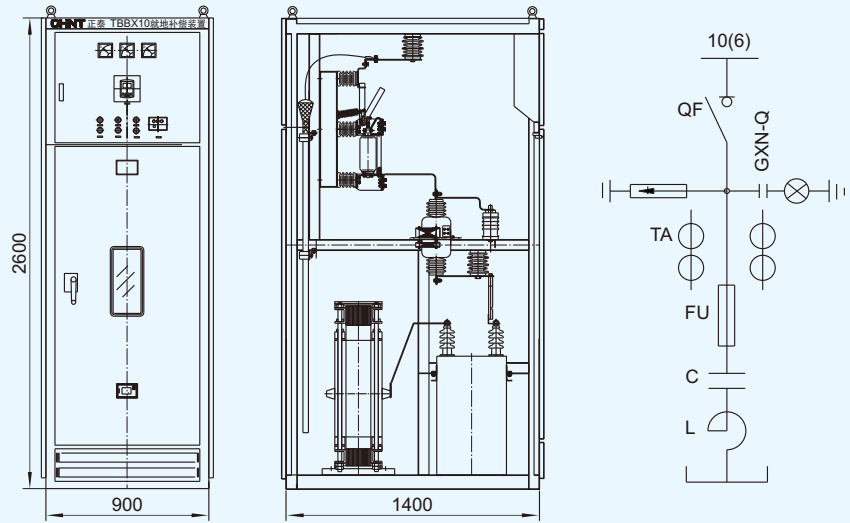
Drawing 4 TBBX(6)10-□ -3NIV



Type	Capacitor collocate
TBBX(6)10-□ -300/100-3N	BFM□ / $\sqrt{3}$ -100-1
TBBX(6)10-□ -400/134-3N	BFM□ / $\sqrt{3}$ -134-1
TBBX(6)10-□ -450/150-3N	BFM□ / $\sqrt{3}$ -150-1
TBBX(6)10-□ -500/167-AK	BFM□ / $\sqrt{3}$ -167-1

High Voltage Capacitor

Drawing 5 TBBX(6)10-□ -3N V



Type	Capacitor collocate
TBBX□ -200/67-3N	BFM□ / $\sqrt{3}$ -67-1
TBBX□ -700/234-3N	BFM□ / $\sqrt{3}$ -234-1
TBBX□ -750/250-3N	BFM□ / $\sqrt{3}$ -250-1
TBBX□ -800/267-3N	BFM□ / $\sqrt{3}$ -267-1
TBBX□ -900/300-3N	BFM□ / $\sqrt{3}$ -300-1