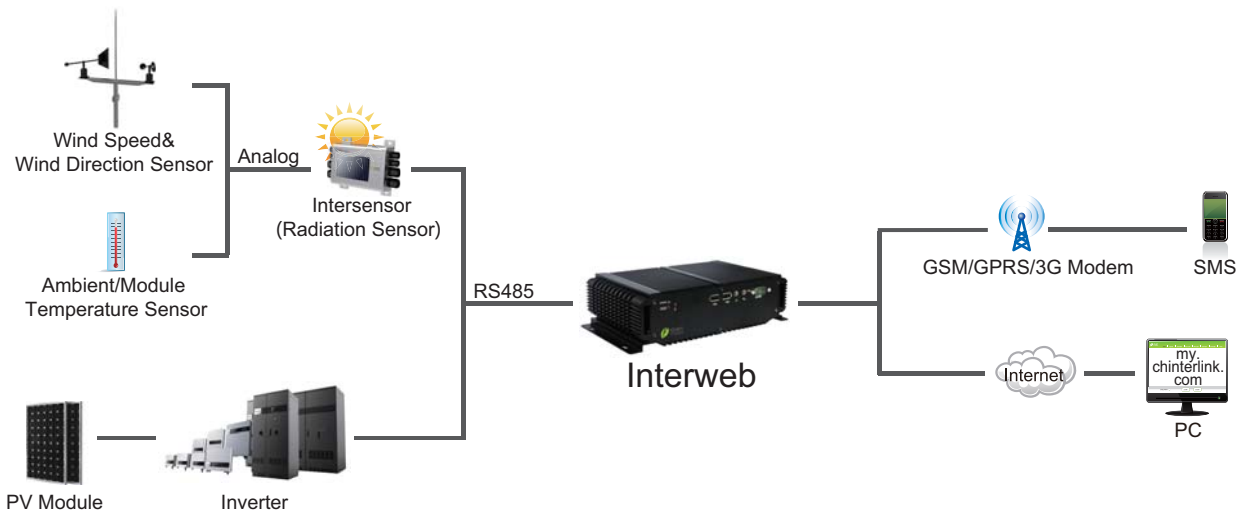


PV Power Plant Monitoring System

The “Interweb”, a Chint Power PV power plant monitoring system, is comprised of software and configurable server. The software is a standing-alone package, and is installed under Windows OS for on-site monitoring of PV system. It is a web-based system for Internet web-access through LAN or WAN, and worked with an ultra-compact and highly efficient low power hardware. The Chint Power inverter and its peripherals are connected to Interweb via RS485 interface. Interweb records system operation data, fault messages, historical data, and etc. Configuration tools are available for flexible system management. Various charts and diagrams are provided by Interweb for yield report and analysis; the fault notifications are sent through email and/or SMS.

■ Diagram



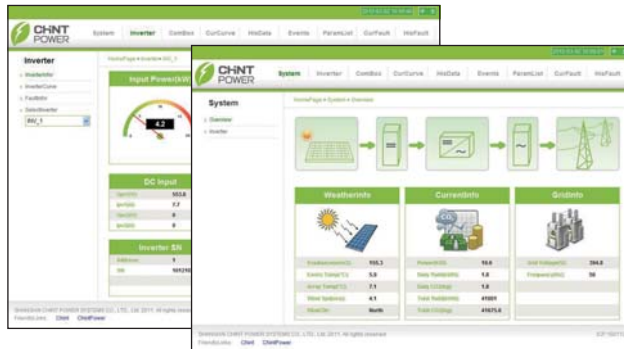
■ Interweb



Ultra-Compact Server with Interweb Preloaded

- Web-based system for Internet access
- Power efficient software and hardware design.
- Configurable software for 4 RS232/RS485 interfaces
- 250G hard disk with 150MB/s transfer speed, CF card supported
- Alarm notification: Email, SMS (optional)
- Max 124 CPS devices (inverters and peripherals) supported
- Total solution for monitoring in one box

■ Software Features



- Abundant data and reports
- Graphic display, easy to catch
- Users-friendly interface
- Easy exporting historical report, sent weekly by email

■ Interweb Overview

OS	Windows 2000/XP
Hardware	CPU: Intel Atom D525, Memory: 1G, Hard disk: 250G (Minimum requirement)
Resolution	SVGA/1024X768
System Info.	Total power, daily generation power, daily CO ₂ saving, total generation power, total CO ₂ saving, radiation, environmental temperature, grid voltage & frequency, etc
Inverter Info.	PV voltage & current, input power, AC voltage & current & frequency, output power, temperature (internal, module, transformer), daily generation power, total generation power, current fault, historical fault, power curve
Environment Info.	Solar radiation, Environment temperature
Fault Alert	Email and SMS
Historical Data Report	Exporting historical data and fault information report, sent weekly by email

■ International 3rd party Monitoring Cooperation



Chint Power Systems has cooperated with a number of internationally renowned third party monitoring platform providers. The customers can also select and use based on their needs.