



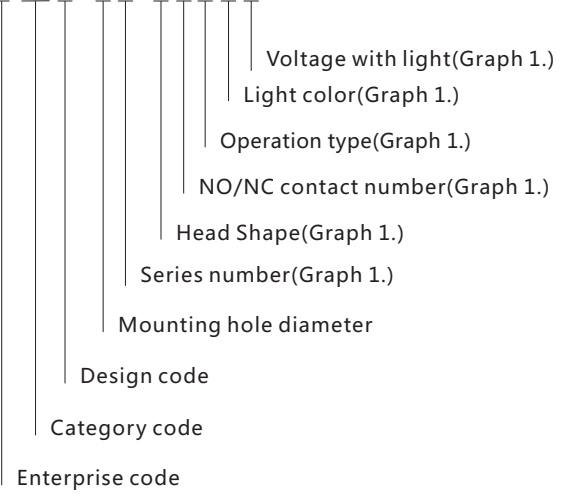
NPM8 Series metal pushbuttons

1. General

Electric ratings: AC 50Hz/60Hz, AC220V/DC110V Degree of protection: IP65 Standard: IEC/EN 60947-5-1

2. Type & meaning

N PM 8 - □□/□□□□



3. Operating conditions

3.1 Ambient temperature is -5 °C ~+ 40 °C, The average temperature during 24 hours couldn' t exceed +35°C.

3.2 Altitude: ≤2000m

3.3 Atmosphere condition: Relative humidity of the atmosphere couldn' t exceed 50% when the highest temperature is +40°C ; much higher relative humidity is allowable under the condition of lower temperature, for example, when the temperature reaches +20 °C, the relative humidity is up to 90%, as for dews, which contingently appear due to change of temperature, special steps should be taken.

3.4 Pollution degree: 3

3.5 Overvoltage category: II

3.6 Pushbuttons should be installed where is no significant shaking, shock vibration and no rain or snow.

3.7 Pushbutton should be installed in a medium free from explosion danger, and the medium shall be free from gases and large dust to corrode the metal and destroy the insulation.

Graph 1.

Mounting hole diameter	Series number	Head Shape	NO/NC contact number	Operation type	Light color	Voltage with light
22: Φ22	A:Button series	P: Flat button	10: 1 NO	F: Self-reset	R: Red	AC 220V
19: Φ19		G:High button			G:Green	AC/DC 110V
16: Φ16		D: Single light flat button	11: 1NO & 1NC	Z: Self-locking	Y:Yellow	AC/DC 60V
12: Φ12		B: Single light high button			W:White	AC/DC 25-48V
		H: Ring light flat button	22:2NO & 2NC		B:Blue	AC/DC 9-24V
		C: Ring light high button			O:Orange	AC/DC 3-8V
		E:Power identification flat button				
		F:Power identification high button				
		M:Mushroom button				
	J: Scram type					
	Y:Key switch					
	X:Selector switch					
	Z:Indicator light					

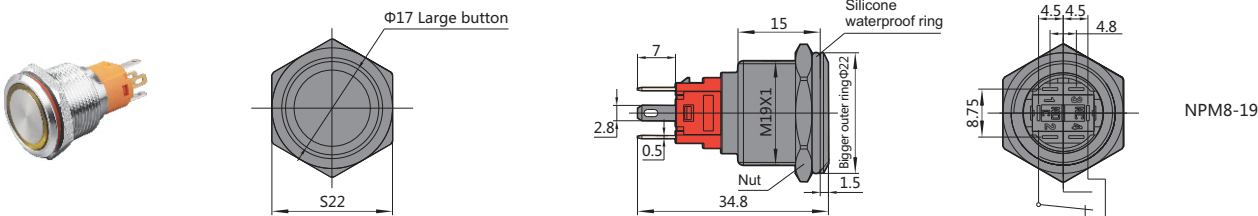
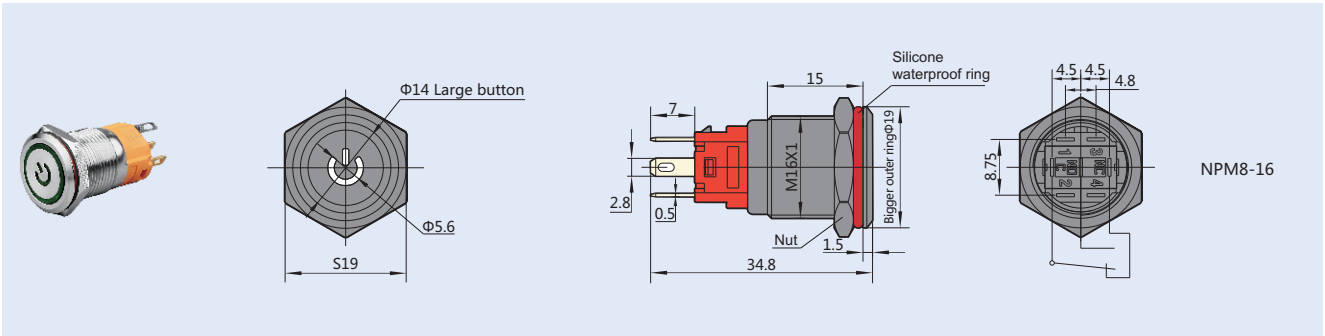
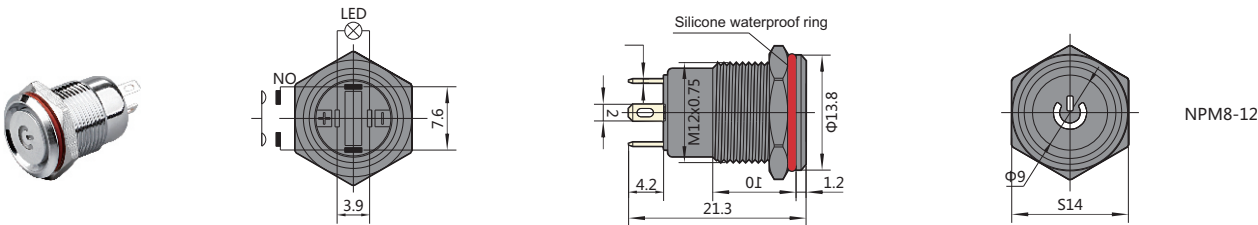
4. Technical data (Graph.2)

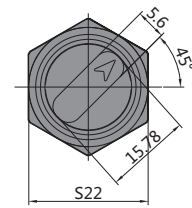
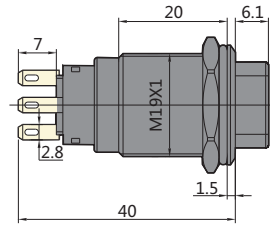
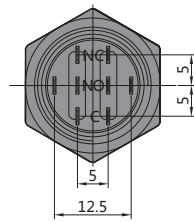
Rated insulation voltage	AC 250V				
Utilization category	AC-15		DC-13		
Rated operational voltage	AC220V	AC110V	DC110V	DC24V	DC12V
Rated operational current	0.5A	1.0A	0.2A	1.0A	1.0A

Graph 3.

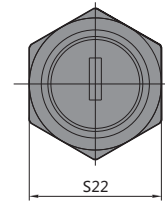
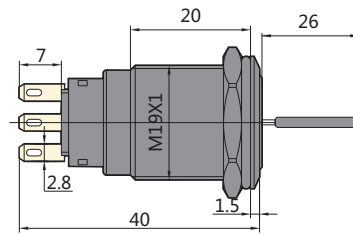
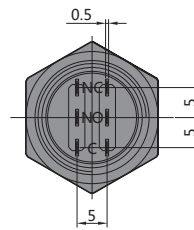
Mechanical life: General self-reset 1×10 ⁶ times; Key switch, Selector switch &Indicator light 100×10 ³
Electric life: 50×10 ³
Head protection level : IP65 (Option: IP67)

5. Appearance and mounting dimensions

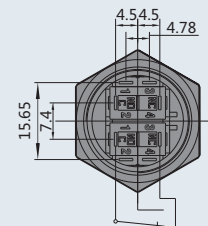
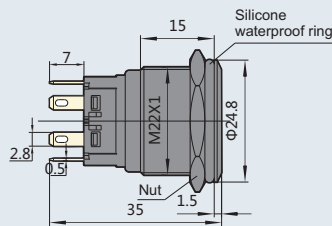
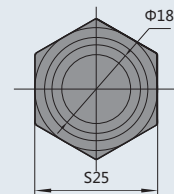




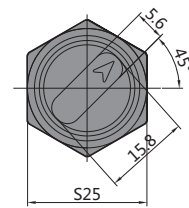
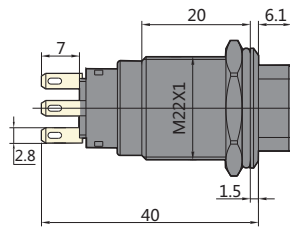
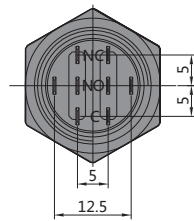
NPM8-19



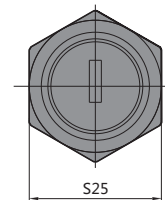
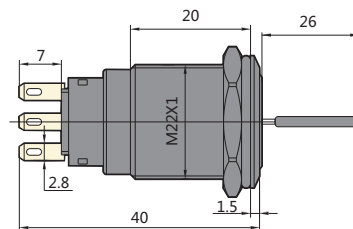
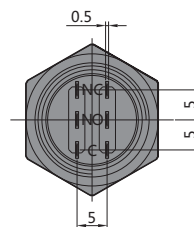
NPM8-19



NPM8-22



NPM8-22



NPM8-22

