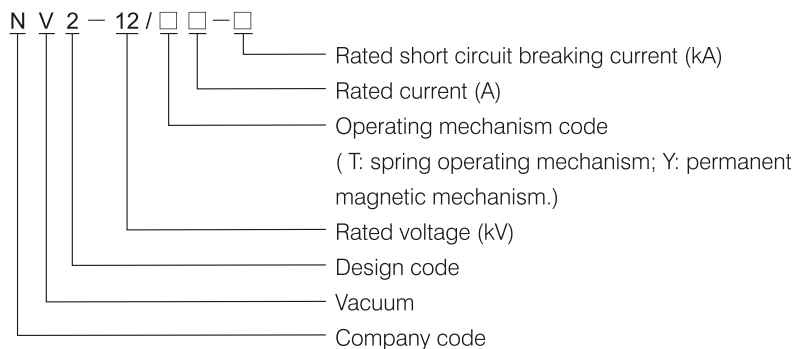


NV2 Vacuum Circuit Breaker, Indoor Type

1. General

- 1.1 Ratings: Rated voltage 12kV, Rated current 630A~4000A, AC50HZ
- 1.2 Application: for the control and protection of substation and equipments; making and breaking short-circuit current under various operating status of electric network.
- 1.3 Standard: IEC62271-100

2. Type and Interpretation



NV2-12

(permanent magnetic mechanism)



NV2-12

(spring operating mechanism)

3. Working Condition

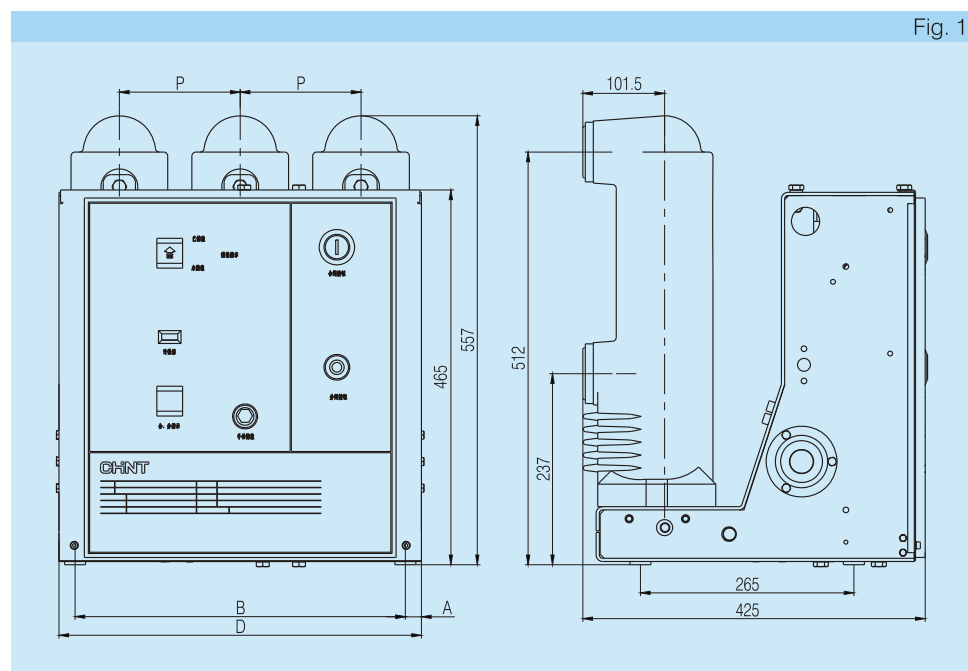
- 3.1 Ambient air temperature: -25~40°C
 - 3.2 Altitude: ≤2000m
 - 3.3 No operating in such places as subject to dust, dirt, smog, corrosive/flammable gas, vapor and salt pollution.
 - 3.4 Humidity: Daily average value ≤95%
Monthly average value ≤90%
 - 3.5 Water vapor pressure: Daily average value ≤2.2kPa
Monthly average value ≤1.8kPa
 - 3.6 The external shocking and earthquake could be neglected.
 - 3.7 The amplitude of electromagnetic interference in the secondary system ≤1.6kV.
- ※ Note: Customized products are available on your requirements.

4. Main Technical Parameter

Item		Unit	Data
Rated voltage		kV	12
Rated insulation level	1 min power frequency withstand voltage(vacuum open contacts)	kV	42
	Lightening impulse withstand voltage(vacuum open contacts)	kV	75
Rated frequency		Hz	50
Rated current		A	630, 1250, 1600, 2000, 2500, 3150, 4000
Rated short-time withstand current		kA	16, 20, 25, 31.5, 40
Rated withstand current(peak)		kA	40, 50, 63, 80, 100
Rated short-circuit breaking current		kA	16, 20, 25, 31.5, 40
Rated short-circuit making current		kA	40, 50, 63, 80, 100
Rated duration of short-circuit		s	4
Rated operating sequence			O-0.3s-CO-180s-CO
Mechanical life			M2 class (30000times)
Rated voltage of operating power		V	AC 220/DC 220
Full breaking time		ms	≤70
Electrical life			E2 class

5. Overall and Installation Dimension

5.1 Overall and installation dimension of fixed type circuit breaker (Fig. 1 and Fig. 2)

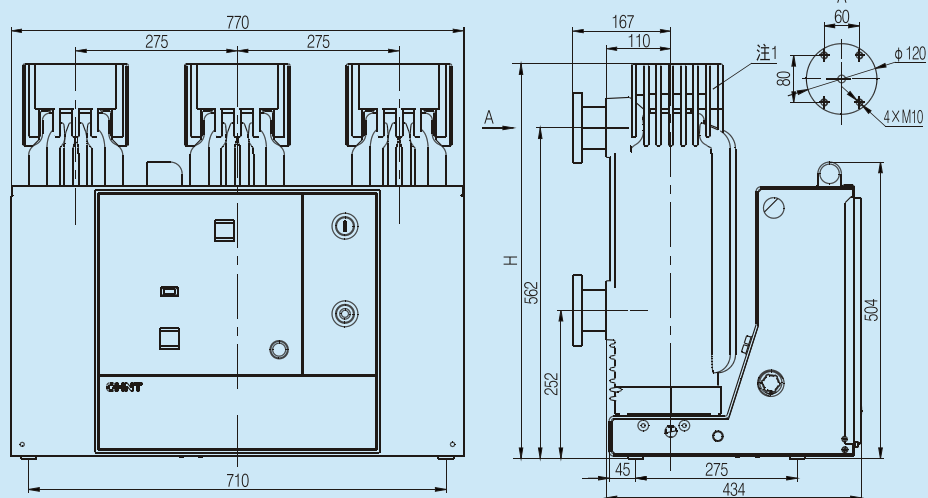


Alternative parameters

Table 1

Rated voltage kV	Rated current kA	Rated short-circuit breaking current, kA	P mm	A mm	B mm	D mm
12	630, 1250	20, 25, 31.5	150	20	410	450
	630, 1250	20, 25, 31.5	210	34	520	588
	1600	20, 25, 31.5, 40				
	630, 1250	20, 25, 31.5	275	30	710	770
	1600	20, 25, 31.5, 40				

Fig. 2



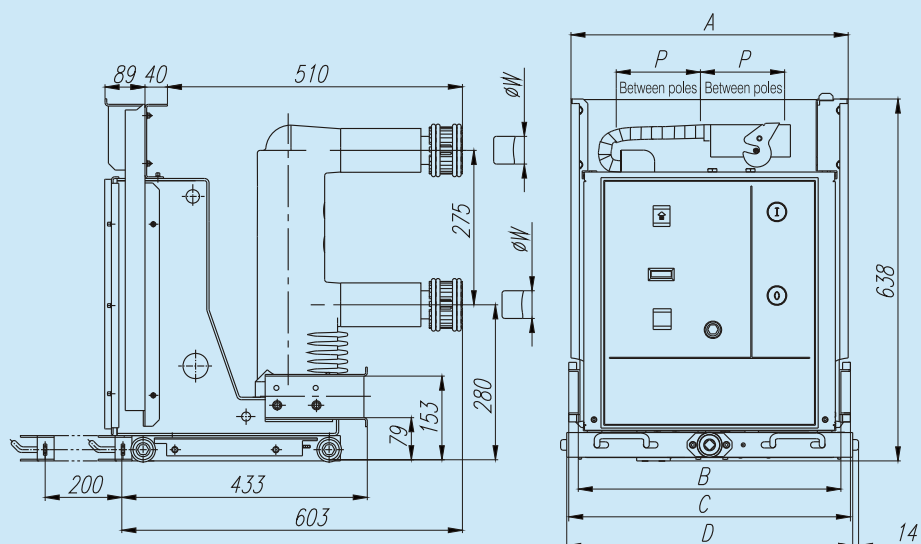
Alternative parameters

Table 2

Rated voltage kV	Rated current kA	Rated short-circuit breaking current kA	H mm
12	1600, 2000	31.5, 40	608
	2500, 3150	31.5, 40	671
	4000	40	680

5.2 Overall and installation dimension of withdrawable circuit breaker trolley (Fig. 3 and Fig. 4)

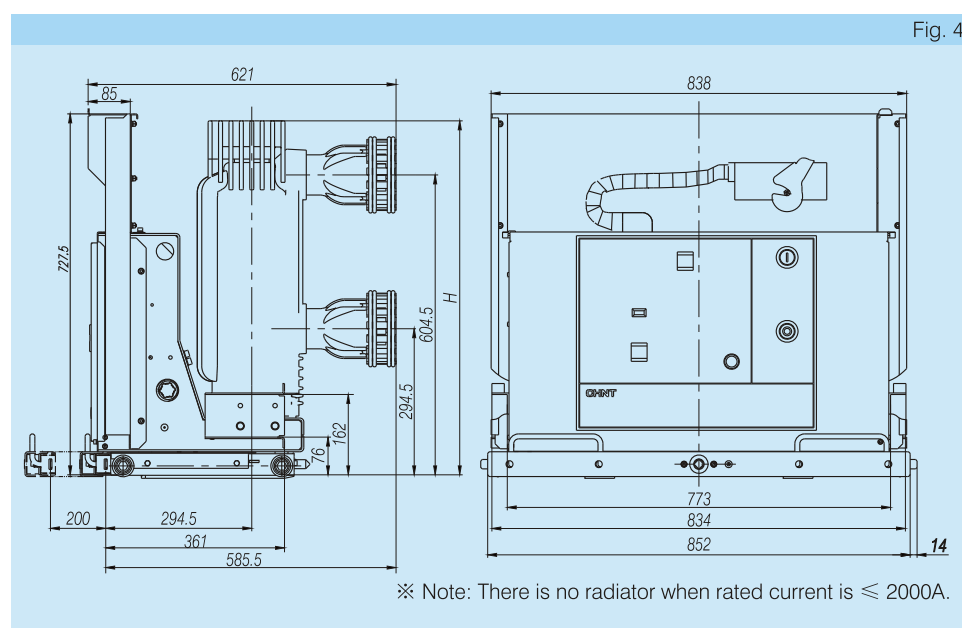
Fig. 3



Alternative parameters

Table 3

Rated voltage kV	Rated current kA	Rated short-circuit breaking current, kA	P mm	A mm	B mm	C mm	D mm	W mm
12	630	20, 25	150	494	456	490	502	35
	630, 1250	20, 25, 31.5, 40						49
	1600	20, 25, 31.5, 40						55
	630	20, 25	210	638	591	637	652	35
	630, 1250	20, 25, 31.5, 40						49
	1600	20, 25, 31.5, 40						55
	630	20, 25	275	838	773	834	852	35
	630, 1250	20, 25, 31.5, 40						49
	1600	20, 25, 31.5, 40						55



Alternative parameters

Table 4

Rated voltage kV	Rated current kA	Rated short-circuit breaking current kA	H mm
12	1600, 2000	31.5, 40	652
	2500, 3150	31.5, 40	714
	4000	40	725

6. Ordering Information

Please indicate the following items when order:

- 6.1 Type, name and quantity.
- 6.2 Rated voltage, rated current and rated short-circuit breaking current.
- 6.3 Rated voltage of auxiliary circuit.
- 6.4 Name and quantity of spare parts.

※ Customized products are available per your requirements.